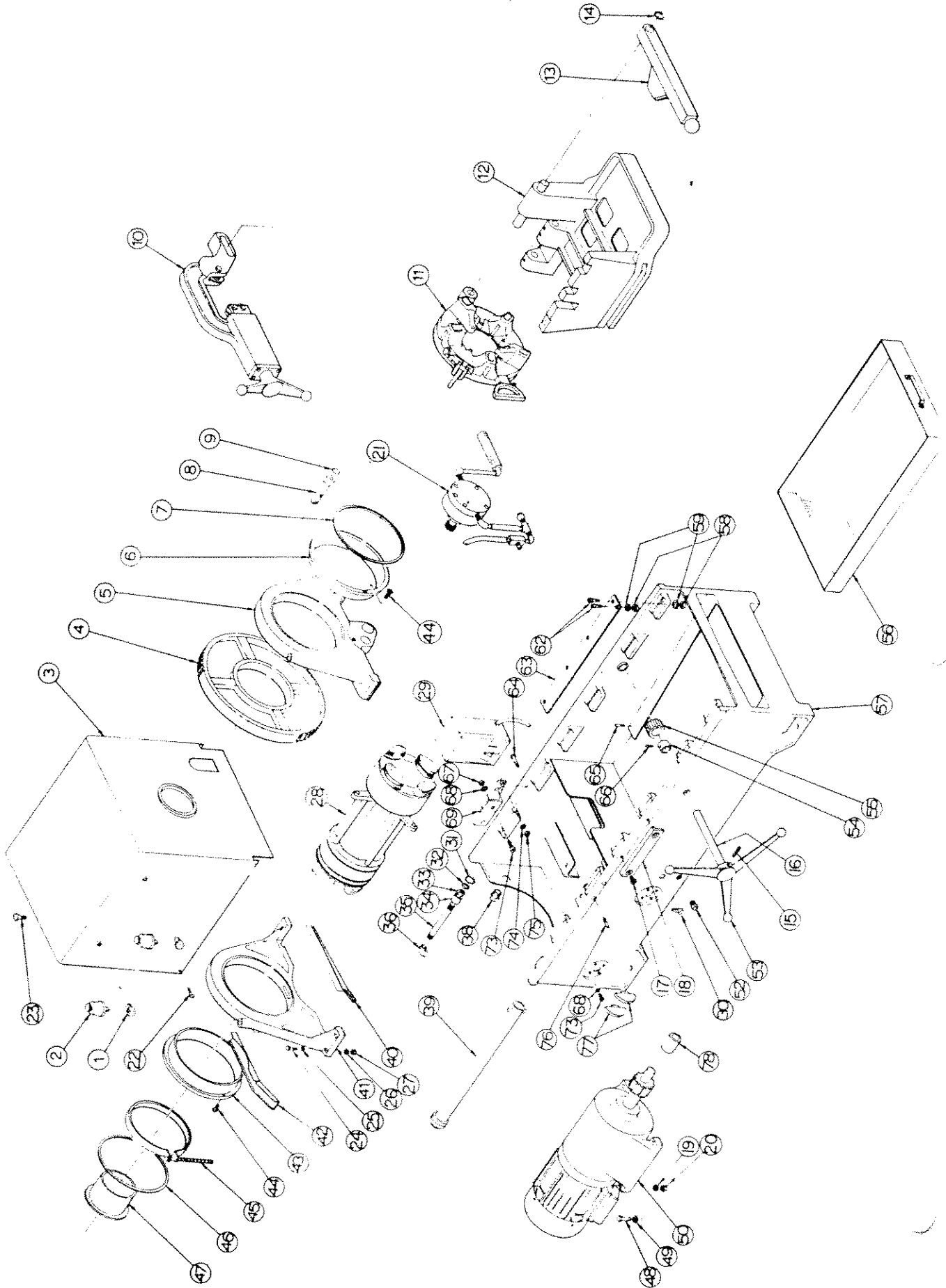


33A



THRED-O-MATIC "33-A" MAIN ASSEMBLY

13394 - Complete foot switch

421 Floor Spindle
(Screw) replace with bar

421 Floor Spindle
(Screw) replace with bar

41. 12495 Spindle Block, Rear
42. 4207 Shield, Oil Drip, Rear
NF-503-F Screw, Self Tapping, Drip Shield Att., 10-24 x 1/2" (2)
43. 4080 Bearing, Spindle, Rear
44. J-305 Screw, Flat Hd. Match, Bearing Att., 10-24 x 1/2" (4)
45. 4250 Brake Band Assembly¹
46. 4218 Ring, Spindle Retaining, Rear
47. 12548 Adapter, Small Pipe
48. A-507 Bolt, Motor Att., 1/2" x 13 x 2" (4)
49. DA-106-W Washer, Flat, Motor Att., 1/2" (4)
50. 13905 Motor and Transmission Assembly, 220 V., 3 Phase¹
Motor and Transmission Assembly, 380-440 V., 3 Phase¹

41. 12495 Elbow, Oil Cup (2)
42. 4558 Oil Cup, Lubricating (2)
3. 12494 Cover, Spindle
4. 12463 Gear, Spur, Spindle, 166 T (Left & Right)
5. 12518 Spindle Block, Front
6. 4680 Bearing, Spindle, Front
7. YCSA-850 Ring, Spindle Retaining, Front
8. 4770 See Oil Line Assy. No. 12528
9. 4566 See Oil Line Assy. No. 12528
10. 4620 Cutter Assembly, Wheel Type¹
11. — Die Head Assembly¹
12. 12802 Carriage Assembly¹
13. 4760 Reamer Assembly¹
14. Y-5100-100 Ring, Reamer Assembly Retaining
15. U-922 Pin, Spring, Handle Att., 1/4" x 2"
16. 12526 Shaft, Carriage Feed
17. J-1203 Screw, Flat Hd. Mach., 5/16" x 18 x 1/2" (2)
18. 4680 Make-on Bar
19. C-112-M Lockwasher, Major Att., 7/16"
20. B-105 Nut, Motor Att., 1/2" (4)
21. 12497 Pump Assembly¹ (See also No. 12528 Oil Line Assembly)
Pump Assembly, Right & Left¹ (See also No. 12528 Oil Line Assembly)
12497 12528 Oil Line Assembly
13064 Pump Assembly, Standard¹ (See also No. 12528 Oil Line Assembly)
22. G-103 Screw, Button Hd. Cap, Spindle Cover Att., 1/4" x 20 x 1/2" (4)
23. 3404 Thumbscrew, Adapter, 3/8" x 16 x 1"
24. A-408 Screw, Cap, Spindle Block Att., 7/16" x 14 x 2 1/4" (8)
25. DA-205-N Washer, Flat, Spindle Block Att., 7/16" (8)
26. C-112-M Lockwasher, Spindle Block Att., 7/16" (8)
27. B-104 Nut, Spindle Block Att., 7/16" x 14 (8)
28. 12789 Spindle Assembly, R — L¹
4220 Spindle Assembly, Standard¹
29. 12536 Starter, Manual
30. 12236 See Oil Line Assembly No. 12528
31. 4572 See Oil Line Assembly No. 12528
32. 4567 See Oil Line Assembly No. 12528
33. B-260 See Oil Line Assembly No. 12528
34. 4542 See Oil Line Assembly No. 12528
35. 4540-1 See Oil Line Assembly No. 12528
36. 4044 See Oil Line Assembly No. 12528
37. —
38. 12556 Bushing, Strain Relief, Power Cord
39. 4033 Extension Bar Assembly, Breakdown
Includes:
U-918 Pin, Spring, 1/4" x 1 1/2"
1030-2 Cap, Pipe
4033-1 Bar, Extension
40. 4206 Shield, Oil Drip, Front
NF-503-F Screw, Self Tapping, Drip Shield Att., 10-24 x 1/2" (2)

51. 4016 Handle
K-956-P Screw, Mach., Handle Att., 10-32 x 1/2" (4)
B-133 Nut, Handle Att., 10-32 (4)
Base
57. 12451 Nut, Rail and Carriage Stop Att., 5/16" x 18 (9)
58. B-102 Lockwasher, Rail and Carriage Stop Att., 5/16" (9)
59. C-110-M Screw, Soc. Hd. Cap, Rail and Carriage Stop Att., 5/16" x 18 x 1" (9)
Rail, Base (2)
62. F-206 Screw, Flat Hd. Cap, Bracket Att., 5/16" x 18 x 1" (2)
63. 12527 Pin, Groove, Gear Att., 3/16" x 1 1/2"
64. E-206 Set Screw, Collar Att., 5/16" x 18 x 5/16"
65. P-708-A Nut, Manual Starter Box Att., 10-24 (2)
66. H-202-D Lockwasher, Switch & Box Att., No. 10 (10)
67. B-132 Bracket, Manual Starter Box
68. CB-107-A
69. 12525
70. —
71. —
72. —
73. K-959 Screw, Mach., Switch & Manual Starter Att., No. 10-32 x 3/4" (10)
74. C-110-M Lockwasher, Bracket Att., 5/16" (2)
75. B-102 Nut, Hex., Bracket Att., 5/16" x 18 (2)
76. H-209-D Setscrew, Spindle Adjusting, 5/16" x 18 x 1" (4)
77. 12803 Handle, Switch (2)
78. 12539 Bearing, Needle, Gearshaft

¹See Detailed Assemblies