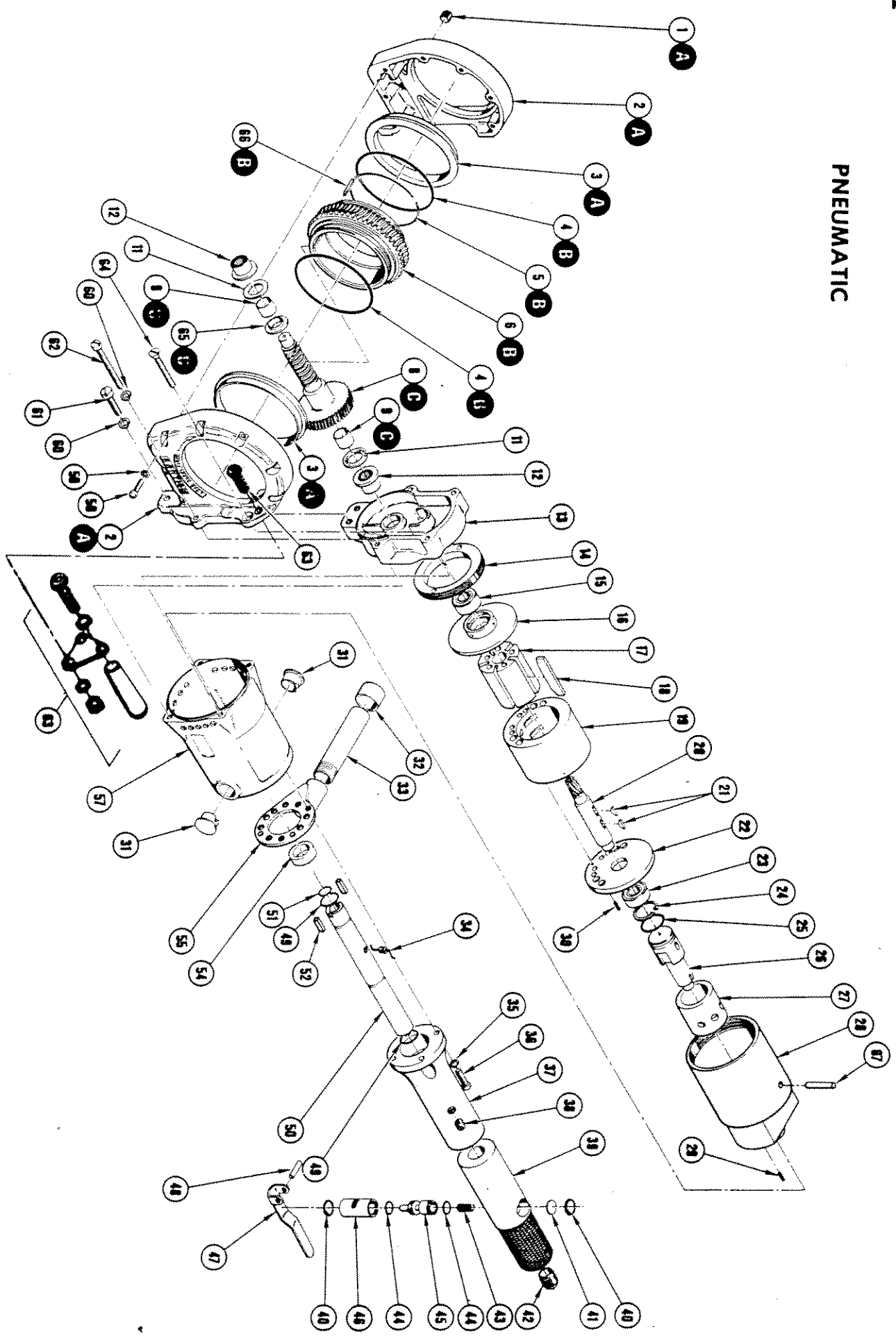


PNEUMATIC



PNEUMATIC

PARTS

1.	13140	Plug, Pipe, Slotted, 1/8"-27 NPT	36.	K-1109	Screw, Machine, 1/4-20 x 1" Lg. (4)
2.	13137-1	Housing, Drive Gear	37.	12357	Handle Half, Front
3.	13138	Bushing, Shoulder, Drive Gear Hsng. (2)	38.	13423	Plug, Pipe, 1/8-27 NPT
4.	13114	Packing, Preformed ("O" Ring) (2)	39.	12356	Handle Half, Rear
5.	13121	Spring, Die Hd. Retainer	40.	13345	Ring, Retaining, Internal
6.	13161-1	Gear, Worm Wheel	41.	13399	Disc, Valve
7.	—	Worm Shaft	42.	13451	Plug, Pipe, Plastic, 1/2-14 NPT
8.	13162	Race, Bearing Inner (2)	43.	13452	Spring, Compression, Valve
9.	13118	Washer, Thrust, Bearing (2)	44.	13346	Packing, Preformed ("O" Ring)
10.	—	Bearing, Needle (2)	45.	12364	Valve
11.	13117	Support, Motor	46.	12365	Bushing, Valve
12.	13116	Ring, Locking, Threaded	47.	12368	Lever, Valve Operating
13.	13101	Bearing, Ball	48.	U-715	Pin, Spring, Trigger Lever, 3/16" x 1" Lg.
14.	12361	Plate, Bearing Support, Front	49.	12619	Packing, Preformed ("O" Ring) (2)
15.	13344	Rotor, Air Motor	50.	14306	Shaft, Valve Control
16.	12358	Vane, Air Motor (5)	51.	13342	Packing, Preformed ("O" Ring)
17.	12360	Cylinder, Air Motor	52.	12290	Key, Square, 1/8 x 1/2" LG. (2)
18.	12370	Gearshaft, Air Motor	53.	—	Coupling, Shaft
19.	12355	Key, Woodruff, 1/8" x 5/8" (2)	54.	14302	Bracket, Torque Rod
20.	12367	Plate, Bearing Support, Rear	55.	13105	Housing, Motor, Outer
21.	1338	Bearing, Ball	56.	—	Screw, Mach., Fil. Hd., No. 10-24 x 7/8" Lg. (7)
22.	12359	Ring, Retaining, Internal	57.	14303	Lockwasher, Tooth, No. 10 (7)
23.	13141	Packing, Preformed ("O" Ring)	58.	K-910	Lockwasher, 1/4"
24.	13343	Valve, Air Motor	59.	CB-107	Screw, Mach., Fil. Hd., 1/4-20 x 7/8" Lg. (2)
25.	13072	Housing, Sleeve, Air Valve	60.	C-109	Handle Assy., Carrying
26.	14305	Housing, Motor, Inner	61.	K-1108	Screw, Mach., Flat Hd., 1/4-20 x 2" Lg. (2)
27.	12369	Pin, Spring, 1/8" x 7/16" Lg.	62.	K-1115	Support, Bearing, Worm Shaft
28.	14304	Pin, Spring, 3/16" x 1/2" Lg.	63.	12327	Key, Square, 1/4"
29.	U-406	Plug, Hole, 1/2"	64.	J-1114	Pin, Dowel, 1/8 x 7/8 LG.
30.	U-707	Cap, Torque Rod	65.	13115	Housing Assembly
31.	13338	Rod, Torque	66.	12618	Gear Assembly, Worm Wheel
32.	13155	Screw, Wick	67.	0-105	Worm Shaft Assembly
33.	13107	Washer, Lock, 1/4"	SUBASSEMBLIES		
34.	13347		A	13137	Motor & Handle Assembly
35.	C-109-HC		B	13161	(Includes Items # 14 Thru 67)