

Gewindeschneidköpfe – Die Heads

Stand / dated: 06/04

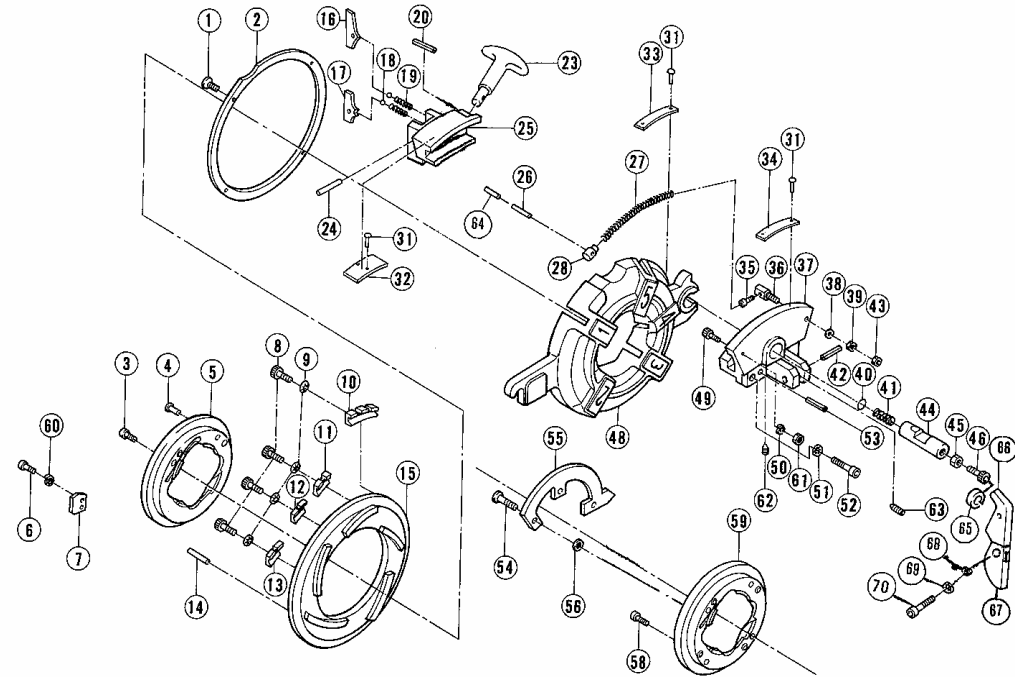
Automatik-Schneidkopf ½"- 3" – Automatic-Die-Head ½"- 3"

Nr. / No.	Bezeichnung	Description	Menge /QTY.	Art.-Nr / No.
1	Senkschraube M6x15 DIN 7991	Countersunk screw M6x15 DIN 7991	4	8.3489
2	Ringplatte 1/2"-2"	Ring plate 1/2"-2"	1	8.3490
2	Ringplatte 2 1/2"-3"	Ring plate 2 1/2"-3"	1	8.3491
3	Kugelkappe	Ball cap	4	8.3601
4	Zylinderschraube M6 X 20 DIN 912	Cylindrical screw M6 X 20 DIN 912	4	8.1023
5	Haltering 1/2"-2"	Retainer plate 1/2"-2"	1	8.3488
5	Haltering 2 1/2"-3"	Retainer plate 2 1/2"-3"	1	8.3496
6	Zylinderschraube M6 X 18 DIN 912	Cylindrical screw M6 X 18 DIN 912	6	8.3501
7	Scheibe DIN 125-6	Washer DIN 125-6	6	8.3526
8	Einstellsegment 1/2"	Location block 1/2"	1	8.3241
8	Einstellsegment 3/4"	Location block 3/4"	1	8.3242
8	Einstellsegment 1" L	Location block 1"	1	8.3243
8	Einstellsegment 1.1/4"	Location block 1.1/4"	1	8.3244
8	Einstellsegment 1.1/2"	Location block 1.1/2"	1	8.3245
8	Einstellsegment 2"	Location block 2"	1	8.3246
8	Einstellsegment 2 1/2"	Location block 2 1/2"	1	8.3247
8	Einstellsegment 3"	Location block 3"	1	8.3248
8	Einstellsegment zum Schneidbacken Wechsel	Location block for change dies	1	8.4043
9	Spannstift 8 X 35 DIN 1481	Dowel pin 8 X 35 DIN 1481	1	8.3528
10	Verstellscheibe 1/2"-2" BSPT	Scroll plate 1/2"-2" BSPT	1	8.3530
10	Verstellscheibe 1/2"-2" NPT	Scroll plate 1/2"-2" NPT	1	8.3855
10	Verstellscheibe 2 1/2"-3" BSPT	Scroll plate 2 1/2"-3" BSPT	1	8.3531
10	Verstellscheibe 2 1/2"-3" NPT	Scroll plate 2 1/2"-3" NPT	1	8.3856
11	Arretiersegment 1/2"-1"	Location plate 1/2"-1"	1	8.3483
12	Kugel 3/16"	Ball 3/16"	1	8.3485
13	Druckfeder	Compression spring	1	8.3486
14	Spannstift 4x18 DIN 1481	Dowel pin 4x18 DIN 1481	1	8.3545
15	Verstellsegment 1/2"-2" BSPT	Profile unit 1/2"-2" BSPT	1	8.3546
15	Verstellsegment 1/2"-2" NPT	Profile unit 1/2"-2" NPT	1	8.3837
15	Verstellsegment 2 1/2"-3"	Profile unit 2 1/2"-3"	1	8.3547
16	Spannstift	Dowel pin	2	8.3487
17	Hebel, Griffstück	Operating handle lever	1	8.6482
18	Arretiersegment 1 1/4"-2"	Location plate 1 1/4"-2"	1	8.3484
19	Spannfeder 1/2"-4"	Spring 1/2"-4"	1	8.3553
20	Federstopper	Spring stopper	1	8.3555
21	Spannstift 6 X 25 DIN 1481	Dowel pin 6 X 25 DIN 1481	1	8.4674
22	Führungshülse	Pin guide	2	8.3556
23	Zylinderschraube M6x6 DIN 912	Cylindrical screw M6x6 DIN 912	1	8.3557
24	Kreuzschlitzschraube M 6x10 DIN 7985	Pan head screw M 6x10 DIN 7985	1	8.3562
25	Zylinderschraube M5x8 DIN 912	Cylindrical screw M5x8 DIN 912	1	8.3563
26	Federstopper	Spring stopper	1	8.3564
27	Grundkörper 1/2"-2"	Die-head body 1/2"-2"	1	8.3565
27	Grundkörper 2 1/2"-3"	Die-head body 2 1/2"-3"	1	8.3568
28	Scheibe DIN 125-6	Washer DIN 125-6	1	8.3599
29	Sechskantmutter M6 DIN 934	Hexagon nut M6 DIN 934	1	8.3654
30	Sechskantmutter M6 DIN 934	Hexagon nut M6 DIN 934	1	8.5873
31	Arretierbolzen 1/2"-2"	Profile pin 1/2"-2"	1	8.3902
31	Arretierbolzen 2 1/2"-3"	Profile pin 2 1/2"-3"	1	8.3903
32	Druckfeder	Compression spring	1	8.3906
33	Federhalteplatte	Spring cap	1	8.3907
34	Sechskantmutter M8 DIN 934	Hexagon nut M8 DIN 934	1	8.3908
35	Stellschraube	Adjust bolt	1	8.3911
36	Halter für Ausrückarm 1/2"-2"	Lever support 1/2"-2"	1	8.3913
37	Spannstift 8x30 DIN 1481	Dowel pin 8x30 DIN 1481	1	8.8598
38	Federscheibe DIN 137-6	Spring washer DIN 137-6	2	8.3651
39	Zylinderschraube M6x35 DIN 912 1/2"-2"	Cylindrical screw M6x35 DIN 912 1/2"-2"	2	8.3926
41	2-Stufen Arretiersegment	2-step thread plate	1	8.3935
42	Arretiersegment	Location plate	1	8.3936
43	Gewindestift M6x8 DIN 913	Set screw M6x8 DIN 913	1	8.3937
44	Spannstift 6x18 DIN 1481	Dowel pin 6x18 DIN 1481	1	8.3938
46	Buchse	Collar	1	8.3513
47	Auslöser Oberteil ½"-2"	Locking lever body ½"-2"	1	8.3502
47	Auslöser Oberteil 2 ½"-3"	Locking lever body 2 ½"-3"	1	8.3504
48	Auslöser Unterteil ½"-2"	Locking lever head ½"-2"	1	8.3503
48	Auslöser Unterteil 2 ½"-3"	Locking lever head 2 ½"-3"	1	8.3505
49	U-Scheibe 6	Washer 6	1	8.3512
50	Federscheibe 6	Spring washer 6	1	8.5899
51	Zylinderschraube M6x12	Hex bolt 6x12	1	8.3655
52	Spannhülse 3,5x12	R-Pin 3,5x12	1	8.4046
53	Madenschraube M6x6	Screw 6x6	1	8.3805
54	Sechskantschraube M6x12	Screw 6x12	1	8.3510

Gewindeschneidköpfe – Die Heads

Stand / dated: 06/04

Automatik-Schneidkopf 2½" - 4" – Automatic-Die-Head 2½" - 4"



Gewindeschneidköpfe – Die Heads

Stand / dated: 06/04

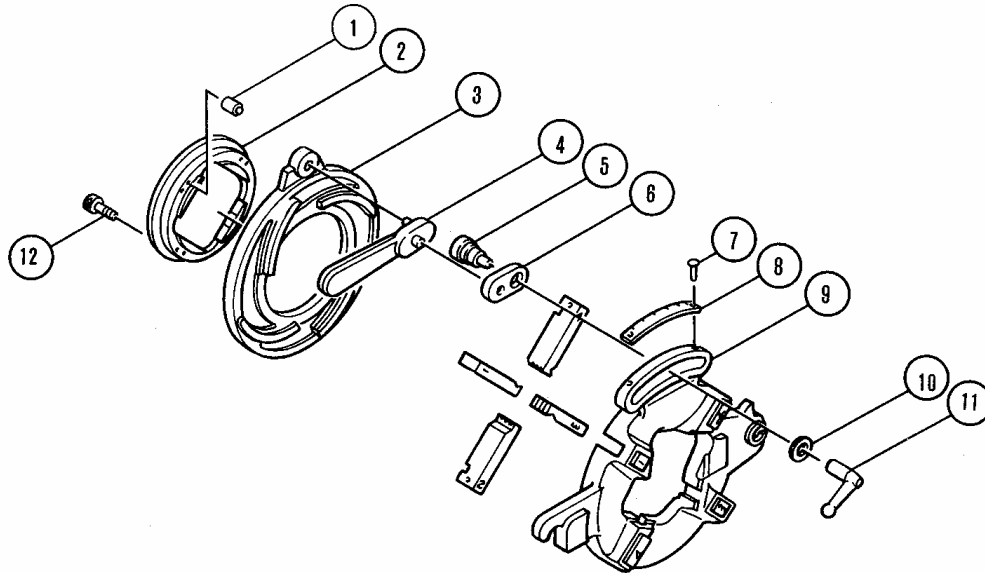
Automatik-Schneidkopf 2½" - 4" – Automatic-Die-Head 2½" - 4"

Nr. / No.	Bezeichnung	Description	Menge /QTY.	Art.-Nr / No.
1	Senkschraube M6x15 DIN 7991	Countersunk screw M6x15 DIN 7991	5	8.3489
2	Ringplatte 3 1/2"-4"	Ring plate 3 1/2"-4"	1	8.3492
3	Zylinderschraube M6x20 DIN 912	Cylindrical screw M6x20 DIN 912	5	8.1023
4	Kugelkappe	Ball cap	5	8.3601
5	Haltering 2 1/2"-4"	Retainer plate 2 1/2"-4"	1	8.3940
6	Linsenschraube M5x10 DIN 7985	Oval head screw M5x10 DIN 7985	2	8.3941
7	Anschlagplatte 2 1/2"-4"	Stopper plate 2 1/2"-4"	1	8.3946
8	Zylinderschraube M6x15	Cylindrical screw M6x15	4	8.3669
9	Scheibe DIN 125-6	Washer DIN 125-6	4	8.3526
10	Einstellsegment 4"	Location block 4"	1	8.3952
11	Einstellsegment 3 1/2"	Location block 3 1/2"	1	8.3953
12	Einstellsegment 3"	Location block 3"	1	8.3955
13	Einstellsegment 2.1/2"	Location block 2.1/2"	1	8.3956
14	Spannstift 5x12 DIN 1481	Dowel pin 5x12 DIN 1481	1	8.5953
15	Verstellscheibe 2 1/2"-4" BSPT	Scroll plate 2 1/2"-4" BSPT	1	8.3958
15	Verstellscheibe 2 1/2"-4" NPT	Scroll plate 2 1/2"-4" NPT	1	8.4123
16	Arretiersegment 2 1/2"-4"	Location plate 2 1/2"-4"	1	8.4124
17	2-Stufen-Arretiersegment 2 1/2"-4"	2-step thread plate 2 1/2"-4"	1	8.4124
18	Kugel 3/16"	Ball 3/16"	2	8.3485
19	Druckfeder	Compression spring	2	8.3486
22	Scheibe DIN 125-6	Washer DIN 125-6	1	8.3526
23	Hebel, Griffstück	Operating handle lever	1	8.6482
24	Spannstift 5x30 DIN 1481	Dowel pin 5x30 DIN 1481	1	8.4138
25	Verstellsegment 2 1/2"-4"	Profile unit 2 1/2"-4"	1	8.4139
26	Spannstift 6x32 DIN 1481	Dowel pin 6x32 DIN 1481	1	8.4137
27	Spannfeder 12"-4"	Spring 12"-4"	1	8.3553
28	Federstopper	Spring stopper	1	8.3555
35	Zylinderschraube M5x8 DIN 912	Cylindrical screw M5x8 DIN 912	1	8.3563
36	Federstopper	Spring stopper	1	8.3564
37	Halter für Ausrückarm 2 1/2"-4"	Lever support 2 1/2"-4"	1	8.4145
38	Scheibe DIN 125-6	Washer DIN 125-6	1	8.4144
39	Sechskantmutter M6 DIN 934	Hexagon nut M6 DIN 934	1	8.3520
40	Zwischenplatte 2 1/2"-4"	Receiving plate 2 1/2"-4"	1	8.4152
41	Druckfeder	Compression spring	1	8.4153
42	Spannstift 8x28 DIN 1481	Dowel pin 8x28 DIN 1481	1	8.4164
43	Sechskantmutter M6 DIN 934	Hexagon nut M6 DIN 934	1	8.4169
44	Arretierbolzen 2 1/2"-4"	Profile pin 2 1/2"-4"	1	8.4176
45	Sechskantmutter M8 DIN 934	Hexagon nut M8 DIN 934	1	8.3908
46	Stellschraube 2 1/2"-4"	Adjust screw 2 1/2"-4"	1	8.3911
48	Grundkörper 2 1/2"-4"	Die-head body automatic 2 1/2"-4"	1	8.4179
49	Zylinderschraube M5x12 DIN 912	Cylindrical screw M5x12 DIN 912	1	8.3669
50	Federring DIN 128-A6	Spring ring DIN 128-A6	1	8.5899
51	Federscheibe DIN 137-6	Spring washer DIN 137-6	2	8.3651
52	Zylinderschraube M6x25 DIN 912	Cylindrical screw M6x25 DIN 912	2	8.3927
53	Spannstift 6x20 DIN 1481	Dowel pin 6x20 DIN 1481	2	8.4191
54	Zylinderschraube M6x30 DIN 912	Cylindrical screw M6x30 DIN 912	3	8.4192
55	Abdeckplatte für Haltering 2 1/2"-4"	Retainer plate cover 2 1/2"-4"	1	8.4194
56	Scheibe DIN 125-6	Washer DIN 125-6	3	8.5948
58	Zylinderschraube M6x25 DIN 912	Cylindrical screw M6x25 DIN 912	2	8.4198
59	Haltering	Retainer plate	1	8.3940
60	Federring DIN 128-A5	Spring ring DIN 128-A5	2	8.4094
61	Sechskantmutter M6 DIN 934	Hexagon nut M6 DIN 934	1	8.3520
62	Gewindestift M6x20 DIN 913	Setscrew M6x20 DIN 913	1	8.5883
63	Gewindestift M6x6 DIN 913	Setscrew M6x6 DIN 913	1	8.3805
64	Spannstift 3,5x30	Dowel pin 3,5x30	1	8.3515
65	Buchse	Collar	1	8.3514
66	Auslöser Oberteil	Locking lever body	1	8.3506
67	Auslöser Unterteil	Locking lever head	1	8.3507
68	U-Scheibe 6	Washer 6	1	8.3512
69	Federscheibe 6	Spring washer 6	1	8.5899
70	Zylinderschraube M6x20	Stop bolt 6x12	1	8.3655

Gewindeschneidköpfe – Die Heads

Stand / dated: 05/04

Standard-Schneidkopf BSPT/NPT – Standard-Die-Head BSPT/NPT



Gewindeschneidköpfe – Die Heads

Stand / dated: 05/04

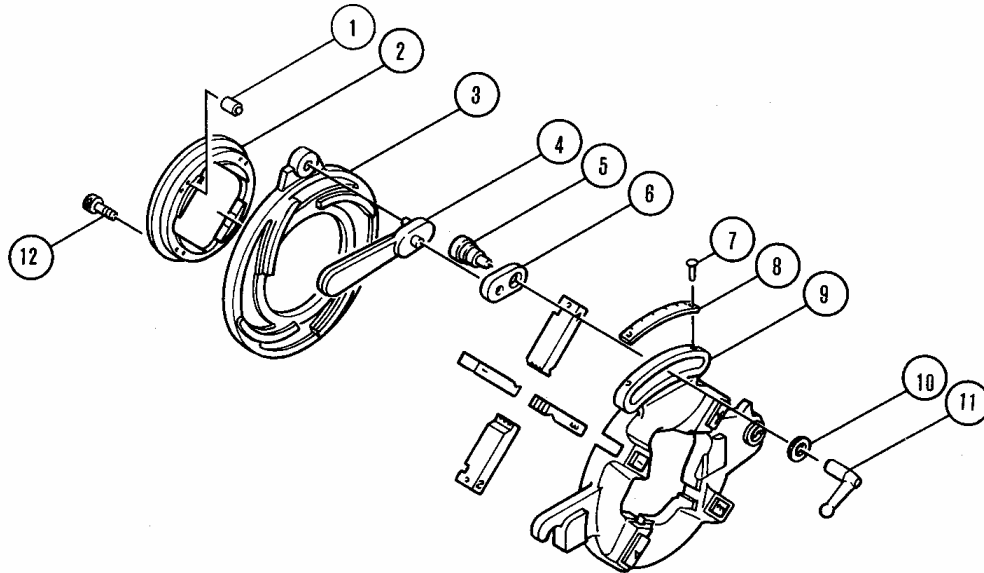
Standard-Schneidkopf BSPT/NPT – Standard-Die-Head BSPT/NPT

Nr./ No.	Bezeichnung	Description	Menge / QTY	Art.Nr. / No
1	Kugelkappe 1/2"-4"	Ball cap 1/2"-4"	4	8.3601
1	Kugelkappe 1/4"-3/8"	Ball cap 1/4"-3/8"	4	8.3602
2	Haltering 1/2"-2"	Retainer plate 1/2"-2"	1	8.3603
2	Haltering 2"-3"	Retainer plate 2"-3"	1	8.3604
2	Haltering 3.1/2"-4"	Retainer plate 3.1/2"-4"	1	8.3497
2	Haltering 1/4"-3/8"	Retainer plate 1/4"-3/8"	1	8.3606
3	Verstellscheibe 1/2"-2"	Scroll plate 1/2"-2"	1	8.3612
3	Verstellscheibe 2"-3"	Scroll plate 2"-3"	1	8.3613
3	Verstellscheibe 3 1/2"-4"	Scroll plate 3 1/2"-4"	1	8.3613
3	Verstellscheibe 1/4"-3/8"	Scroll plate 1/4"-3/8"	1	8.3614
3	Verstellscheibe 2 1/2"-3" NPT	Scroll plate 2 1/2"-3" NPT	1	8.3625
4	Verstellhebel 1/2"-4"	Operating lever 1/2"-4"	1	8.3618
4	Verstellhebel 1/4"-3/8"	Operating lever 1/4"-3/8"	1	8.3769
4	Verstellhebel 2 1/2"-4" NPT	Operating lever 2 1/2"-4" NPT	1	8.3770
5	Schraube geflacht 1/2"-4"	Link pivot screw 1/2"-4"	1	8.3615
5	Schraube geflacht 1/4"-3/8"	Link pivot screw 1/4"-3/8"	1	8.3771
6	Verstellssegment 1/2"-4"	Link 1/2"-4"	1	8.3616
6	Verstellssegment 1/4"-3/8"	Link 1/4"-3/8"	1	8.3772
7	Niete für Skala	Plate tack	2	8.3622
8	Skala 1/2"-2"	Scale plate 1/2"-2"	1	8.3621
8	Skala 2"-3"	Scale plate 2"-3"	1	8.3766
8	Skala 3 1/2"-4"	Scale plate 3 1/2"-4"	1	8.4098
8	Skala 1/4"-3/8"	Scale plate NPT 1/4"-3/8"	1	8.3768
8	Skala NPT 1/2"-2"	Scale plate NPT 1/2"-2"	1	8.3623
8	Skala NPT 2 1/2"-3"	Scale plate NPT 2 1/2"-3"	1	8.3631
8	Skala NPT 3 1/2"-4"	Scale plate NPT 3 1/2"-4"	1	8.3632
8	Skala NPT 1/4"-3/8"	Scale plate 1/4"-3/8"	1	8.3629
9	Grundkörper Standard 1/2"-2"	Die-head body standard 1/2"-2"	1	8.3773
9	Grundkörper Standard 2"-3"	Die-head body standard 2"-3"	1	8.3774
9	Grundkörper Standard 3 1/2"-4"	Die-head body standard 3 1/2"-4"	1	8.3775
9	Grundkörper Standard 1/4"-3/8"	Die-head body standard 1/4"-3/8"	1	8.3776
9	Grundkörper Standard 2 1/2"-3" NPT	Die-head body standard 2 1/2"-3" NPT	1	8.3777
9	Grundkörper Standard 3 1/2"-4" NPT	Die-head body standard 3 1/2"-4" NPT	1	8.3778
10	Scheibe 1/4"-4"	Washer 1/4"-4"	1	8.3619
11	Feststellhebel 1/2"-4"	Scroll plate locking lever 1/2"-4"	1	8.3617
11	Feststellhebel 1/4"-3/8"	Scroll plate locking lever 1/4"-3/8"	1	8.3780
11	Feststellhebel 2 1/2"-4"	Scroll plate locking lever 2 1/2"-4"	1	8.3781
12	Zylinderschraube M6 x 20 DIN 912 1/2"-4"	Cylindrical screw M6 x 20 DIN 912 1/2"-4"	4	8.3782
12	Zylinderschraube M5 x 20 DIN 912 1/4"-3/8"	Cylindrical screw M5 x 20 DIN 912 1/4"-3/8"	4	8.3783

Gewindeschneidköpfe – Die Heads

Stand / dated: 05/04

Standard-Schneidkopf Metrisches Gewinde / Standard Die-Head Metrical Thread

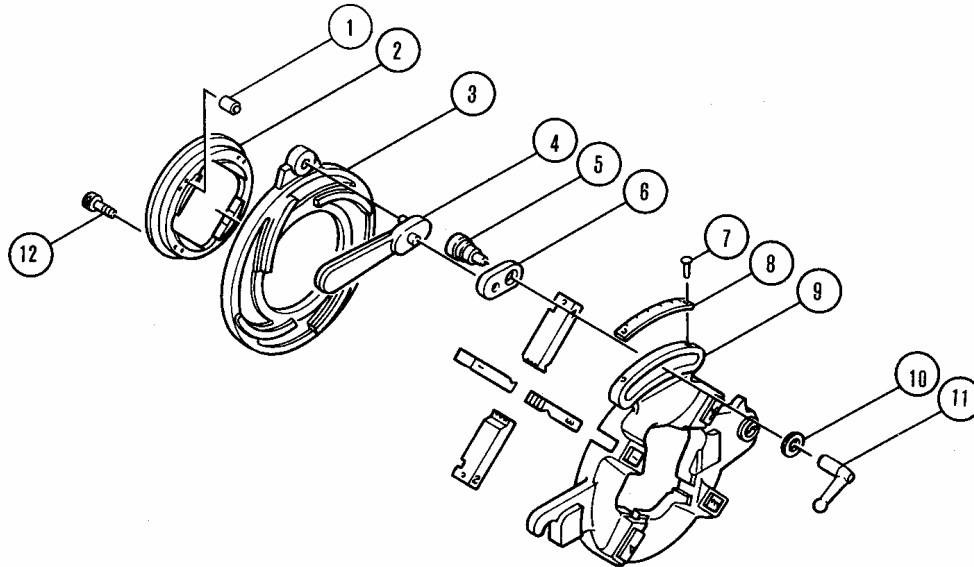


Nr./ No.	Bezeichnung	Description	Menge / QTY	Art.Nr. / No
1	Kugelkappe 27-36 mm	Ball cap 27-36 mm	4	8.3601
1	Kugelkappe 10-24 mm	Ball cap 10-24 mm	4	8.3602
2	Haltering 27-36 mm	Retainer plate 27-36 mm	1	8.3603
2	Haltering 10-24 mm	Retainer plate 10-24 mm	1	8.3606
3	Verstellscheibe 27-36 mm	Scroll plate 27-36 mm	1	8.3611
3	Verstellscheibe 10-24 mm	Scroll plate 10-24 mm	1	8.3614
4	Verstellhebel 27-36 mm	Operating lever 27-36 mm	1	8.3618
4	Verstellhebel 10-24 mm	Operating lever 10-24 mm	1	8.3769
5	Schraube geflacht 27-36 mm	Link pivot screw 27-36 mm	1	8.3615
5	Schraube geflacht 10-24 mm	Link pivot screw 10-24 mm	1	8.3771
6	Verstellsegment 27-36 mm	Link 27-36 mm	1	8.3616
6	Verstellsegment 10-24 mm	Link 10-24 mm	1	8.3772
7	Niete für Skala	Plate tack	2	8.3622
8	Skala 10-24 mm	Scale plate 10-24 mm	1	8.5465
9	Grundkörper Standard 27-36 mm	Die-head body standard 27-36 mm	1	8.3773
9	Grundkörper Standard 10-24 mm	Die-head body standard 10-24 mm	1	8.3776
10	Scheibe 27-36 mm	Washer 27-36 mm	1	8.3779
10	Scheibe 10-24 mm	Washer 10-24 mm	1	8.3619
11	Feststellhebel 27-36 mm	Scroll plate locking lever 27-36 mm	1	8.3617
11	Feststellhebel 10-24 mm	Scroll plate locking lever 10-24 mm	1	8.3780
12	Zylinderschraube M6 x 20 DIN 912 27-36 mm	Cylindrical screw M6 x 20 DIN 912 27-36 mm	4	8.3782
12	Zylinderschraube M5 x 20 DIN 912 110-24 mm	Cylindrical screw M5 x 20 DIN 912 110-24 mm	4	8.3783

Gewindeschneidköpfe – Die Heads

Stand / dated: 05/04

Standard-Schneidkopf BSW / Standard Die-Head BSW



Nr./No.	Bezeichnung	Description	Menge / QTY	Art.Nr. / No
1	Kugelkappe 1 1/8"-2"	Ball cap 1 1/8"-2"	4	8.3601
1	Kugelkappe 3/8"-1"	Ball cap 3/8"-1"	4	8.3602
2	Haltering 1 1/8"-2"	Retainer plate 1 1/8"-2"	1	8.3603
2	Haltering 3/8"-1"	Retainer plate 3/8"-1"	1	8.3606
3	Verstellscheibe 1 1/8"-2"	Scroll plate 1 1/8"-2"	1	8.3611
3	Verstellscheibe 3/8"-1"	Scroll plate 3/8"-1"	1	8.3614
4	Verstellhebel 1 1/8"-2"	Operating lever 1 1/8"-2"	1	8.3618
4	Verstellhebel 3/8"-1"	Operating lever 3/8"-1"	1	8.3769
5	Schraube geflacht 1 1/8"-2"	Link pivot screw 1 1/8"-2"	1	8.3615
5	Schraube geflacht 3/8"-1"	Link pivot screw 3/8"-1"	1	8.3771
6	Verstellsegment 1 1/8"-2"	Link 1 1/8"-2"	1	8.3616
6	Verstellsegment 3/8"-1"	Link 3/8"-1"	1	8.3772
7	Niete für Skala	Plate tack 2	2	8.3622
8	Skala 3/8"-1"	Scale plate 3/8"-1"	1	8.3768
8	Skala 1 1/8"-2"	Scale plate 1 1/8"-2"	1	8.5465
9	Grundkörper Standard 1 1/8"-2"	Die-head body standard 1 1/8"-2"	1	8.3773
9	Grundkörper Standard 3/8"-1"	Die-head body standard 3/8"-1"	1	8.3776
10	Scheibe für 1 1/8"-2"	Washer 1 1/8"-2"	1	8.3779
10	Scheibe für 3/8"-1"	Washer 3/8"-1"	1	8.3619
11	Feststellhebel 1 1/8"-2"	Scroll plate locking lever 1 1/8"-2"	1	8.3617
11	Feststellhebel 3/8"-1"	Scroll plate locking lever 3/8"-1"	1	8.3780
12	Zylinderschraube M6 x 20 DIN 912 für 1 1/8"-2"	Cylindrical screw M6 x 20 DIN 912 for 1 1/8"-2"	4	8.3782
12	Zylinderschraube M5 x 20 DIN 912 für 3/8"-1"	Cylindrical screw M5 x 20 DIN 912 for 3/8"-1"	4	8.3783