

Hand Tools

Tube and Pipe Cutters	42 – 46
Plastic Pipe Shears	47, 48
Pliers	49
Pipe Wrenches	50, 51
Chain Wrenches	51
Deburring and Reaming Tools	52
Basin Wrenches	52
Installation Tools	53

In addition to specialized machines and tools, ROTHENBERGER offers a complete range of high-quality hand tools for plumbing, heating and climate control systems.

Professional clamping, installation, and cutting tools, as well as vices and workbenches for mobile applications, clearly demonstrate the breadth of the ROTHENBERGER product range.



Tube Cutters

ROTRAC Tube Cutters

High precision tube cutter for copper tubes

- Features a spare cutter wheel in handle for cutting stainless steel tube, large knurled knob **Easier to turn**

- Improved design provides smooth-running, telescopic action:
Consistent working radius, blade advances faster

- Cast aluminum design:
Compact and light

- Protected screw spindle:
Prevents dirt ingress and jamming

- Foldaway Reamer



70020
ROTRAC 28 PLUS
Includes 3 copper wheels for stainless steel, pin and clip



70021
ROTRAC 42 PLUS
Includes 3 copper wheels for stainless steel, pin and clip

Description	O.D.	lb	No.
ROTRAC 28	1/8" - 1-1/8"	1.0	70010
ROTRAC 42	1/4" - 1-5/8"	1.0	70011
Cutter Wheel, 2 pk.		0.1	70007B
Cutter Wheel, 10 pk.		0.1	70007X
ROTRAC 28 PLUS	1/8" - 1-1/8"	1.0	70020
ROTRAC 42 PLUS	1/4" - 1-5/8"	1.0	70021
ROTRAC 20PL for plastic pipe	1/8" - 3/4"	1.0	70012
ROTRAC 32PL for plastic pipe	3/16" - 1-1/4"	1.0	70013
ROTRAC 42 for flexible gas pipe	1/4" - 1-5/8"	1.0	70018
Replacement pin, clip		0.3	99016
Cutter Wheel, stainless steel		0.1	90007

Tube Cutter Replacement Wheels

High precision tube cutter for copper tubes

ROTHENBERGER Cutter Wheel Part No.	Fits Cutters from	
	RIDGID®*	Lenox®
70007B, 2 pack <i>Fits Rothenberger cutters 70010, 70011, 70020, 70021</i>	101, 118, 150, 151, 152, 153, 205 <i>replaces #33185</i>	
70017B, 2 pack <i>Fits Rothenberger cutters 70401, 70402, 70105, 70019, 70065, 70027, 70030</i>	10, 15, 20 <i>replaces #33160</i>	21010, 21011, 21012, 21013 <i>replaces #21192, 21017</i>

*Ridgid® is a registered trademark of Ridge Tool Co.

Tube Cutters

- Large knurled knob, handy design:
Fatigue-free pressure control
- Two guide rollers with recess:
Cuts close to flares
- Handy design with very small working radius
Ideal for hard to reach places



MINICUT I PRO / MINICUT II PRO

Tube cutter for copper tubes



Description	O.D.	lb	No.
MINICUT I PRO	1/8" - 5/8"	0.2	70401
MINICUT II PRO	1/4" - 7/8"	0.3	70402
Cutter wheel, 2 pk.		0.1	70017B
Cutter wheel, 5 pk.		0.6	70017D
Axle, screw		0.1	70041

- Large knurled knob, handy design:
Fatigue-free pressure control
- Two guide rollers with recess:
Cuts close to flares
- Handy design with small working radius of 1-3/4" (45 mm):
Ideal for hard to reach places



MINICUT 2000

Tube cutter for copper tubes

Ergonomic design of body and knob with seating surface for the hand during turning



Description	O.D.	lb	No.
MINICUT 2000	1/8" - 7/8"	0.4	70105
Cutter wheel, 2 pk.		0.1	70017B
Cutter wheel, 5 pk.		0.6	70017D
Axle, screw		0.1	70041

- Large knurled knob, handy design:
Fatigue-free pressure control
- Two guide rollers with recess:
Cuts close to flares
- Handy design with small working radius of 1-3/4":
Ideal for hard to reach places



MINI MAX

Tube cutter for copper tubes

Ergonomic design of body and knob with seating surface for the hand during turning



Description	O.D.	lb	No.
MINI MAX	1/8" - 1-1/8"	0.8	70015
Cutter wheel, 2 pk.		0.1	70017B
Cutter wheel, 5 pk.		0.6	70017D
Axle, screw		0.1	70041

- Retractable internal deburrer and spare cutter wheel in handle:
Always within reach
- Two guide rollers with recess:
For cuts close to flares



TUBE CUTTER 30/50

Tube cutter for copper tubes



Description	O.D.	lb	No.
TUBE CUTTER 30	1/8" - 1-1/8"	0.7	71019
TUBE CUTTER 50	1/2" - 2"	0.8	70065
Cutter wheel, 2 pk.		0.1	70017B
Cutter wheel, 5 pk.		0.6	70017D
Cutter wheel, Stainless Steel, 5 pk.		0.6	70056D
Axle, screw		0.1	70041

Tube Cutters

Automatic Tube Cutter

Ratchet telescopic cutter

Description	O.D.	lb	No.
Automatic size 1	1/8" - 2-5/8"	2.0	70030
Spare cutter wheel size 1, 2 pk.		0.1	70017B
Cutter wheel, size 1, 5 pk.		0.3	70017D
Automatic size 2	2" - 5"	3.5	70142
Automatic size 3	4" - 6-5/8"	4.0	70143
Cutter wheel sizes 2/3, 2 pk.		0.1	70057D
Deburring blade sizes 1/2/3, 10 pk.		0.3	21652B
Axle and screw		0.1	70149

For copper, brass, aluminum, thin-walled steel, and plastic coated tubes

- Ratchet telescopic guide with automatic spring-driven withdrawal: **Quick adjustment, fast opening**
- Retractable internal deburring tool and spare cutter wheel in handle: **Always within reach**



Automatic PL Plastic Tube Cutter

Ratchet telescopic cutter for plastic pipe

Description	O.D.	lb	No.
Automatic PL size 1	1/8" - 2-5/8"	2.0	70031
Cutter wheel, size 1, 3 pk.		0.1	70028D
Automatic PL size 2	2" - 5"	3.5	70032
Clutter wheel, size 2, 3 pk.		0.1	55054D
Axle and screw		0.1	70149



70031

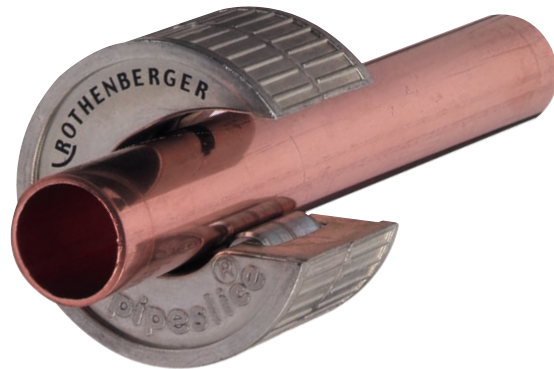
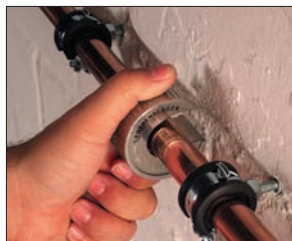
PIPESLICE

Tube Cutter

Cutting copper tubing has never been easier! Simply snap the cutter onto the tube and turn.

Description	Nominal dia.	O.D.	lb	No.
PIPESLICE 1	3/8"	1/2"	0.6	88807
PIPESLICE 2	1/2"	5/8"	0.6	88810
PIPESLICE 3	5/8"	3/4"	0.6	88808
PIPESLICE 4	3/4"	7/8"	0.6	88802
PIPESLICE 5	1"	1-1/8"	1.0	88814
Cutter wheel for 1/2/3			0.1	88806
Cutter wheel for 4/5			0.1	88803

- Cut tubes with less turns: **Quick cutting of copper tubes**
- Self-alignment: **No re-adjustment necessary**
- Less space required: **Ideal for hard to reach places**
- Cast aluminum casing



35 PRO / 42 PRO TUBE CUTTER

Cuts tubes made of:

- copper, brass, aluminum, thin-walled steel
- PE, PP, PVDF, plastic-coated tubes
- stainless steel

- Two guide rollers with recess: **For cuts near flares**



- Constant, tight working radius of 4-7/8" (123 mm) **Perfect for confined spaces**



- Exact telescopic guide: **Precise cut**

- Easy to turn adjustment knob: **Quick adjusting of the working area**



- Retractable internal tube deburrer: **Always within reach**

- Metal casing with DURAMANT® coating: **Strong and extremely stable**

- Spare cutter wheel (70027) in handle: **Immediately available when needed**

4

For Copper, Aluminum

Description	O.D.	lb	No.
35 PRO	1/4" - 1-3/8"	1.0	70027
42 PRO	1/4" - 1-5/8"	1.2	70029
Cutter wheel, 2 pk		0.3	70017B
Cutter Wheel, 5 pk.		0.3	70017D



35 PRO (70027)
42 PRO (70029)



For Multi-layer Piping

Description	O.D.	lb	No.
42 PRO MSR	1/4" - 1-5/8"	1.2	70109
Cutter wheel, 1 pk		0.1	70188



42 PRO MSR (70109)



Constant swing radius of 4.8"

For Stainless Steel

Description	O.D.	lb	No.
35 PRO SS	1/4" - 1-3/8"	1.1	70055
42 PRO SS	1/4" - 1-5/8"	1.2	70070
Cutter wheel, SS		0.1	70056
Cutter Wheel, Stainless Steel, 5 pk.		0.3	70056D



35 PRO SS (70055)
42 PRO SS (70070)

Replacement Parts

Description	O.D.	lb	No.
Deburring Blades, 10 pk.		0.3	21652B
Deburring Blades, 1 pk.		0.1	21652
Axle and screw		0.1	70041

Pipe Cutters

1-1/4" and 2" Steel Pipe Cutter

- Wide rollers:
Secure guiding of cutter wheel on tube

Description	O.D.	lb	No.
1-1/4" Pipe Cutter	1/8" - 1-1/4"	2.5	70040
Cutter wheel, 1-1/4", 3 pk.		0.5	70046D
2" Pipe Cutter	1/8" - 2"	5.5	70045
Cutter wheel, 2", 3 pk.		0.5	70051D
Cutter wheel for cast iron, 2"		0.3	70054
2" Pipe Cutter for Plastic Coated Pipe	1/8" - 2"	5.5	P70045C

- Easy pressure control:
Optimum force transmission onto tube
- Hardened cutter wheel made of high alloy steel:
Long service life
- Burr-free external cutting:
Immediate thread cutting possible
- Optional cutter wheel for cast iron pipes
- 1/8" - 2" Pipe Cutter for Plastic Coated Pipe



4" Steel Pipe Cutter

- Wide rollers:
Secure guiding of cutter wheel on tube
- Easy pressure control:
Optimum force transmission onto tube

Description	O.D.	lb	No.
4" Pipe Cutter	2" - 4"	17.0	70060
Cutter wheel, 4", 2 pk.		0.5	70061D
4" Pipe Cutter for Plastic Coated Pipe			P70060C

- Hardened cutter wheel made of high alloy steel:
Long service life
- Burr-free external cutting:
Immediate thread cutting possible
- Optional cutter wheel for cast iron pipes



Stainless Steel Pipe Cutters

For exact cutting of stainless steel tubes



Description	O.D.	lb	No.
1-1/4" Stainless Steel Pipe Cutter	1/8" - 1-1/4"	2.4	70086
Cutter wheel, 1-1/4"		0.1	70088
2" Stainless Steel Pipe Cutter	1/4" - 2"	4.8	70087
Cutter wheel, 2"		0.1	70089

- Hardened cutter wheel made of high alloy steel:
Long service life
- Burr-free external cutting:
Immediate thread cutting possible



Chain Tube Cutter

Description	O.D.	lb	No.
MULTICUT 65	1" - 2"	1.3	70285
Cutter wheel chain		0.4	70286

For copper, brass, aluminum, thin-walled steel tubes, and plastic coated tubes.

- Stable chain with 15 mini cutter wheels, two-step adjustment:
Ideal for working in confined spaces such as parallel-running tubes
- Chrome-plated with PVC handles



Plastic pipe shears

ROCUT® Professional

For precise cutting of PVC, PP, PE, PEX, PB, and CPVC pipes.
Rugged precision shears for effortless cutting of plastic pipes.



- Double-sided blade and ratchet support:
Precise force transfer and precise guided cutter feed

- Stainless steel blade with V-edge:
Pin-point precision without deformation



- Wide pipe support:
Precise, right-angled cut

- Ideally meshed cutting curve:
Minimum effort during cutting



- Rubber handle:
Secure grip



- Releasing lever:
Automatic, controlled opening of the blade at the push of a button

- Lockable lever:
Shear arms lockable in transport position

52000

ROCUT® Professional 42TC

Description	Max. Sch. 40 PVC	Max. O.D.	lb	No.
ROCUT® 42TC	1-1/4"	1-5/8"	1.0	52000
Blade, replacement			0.3	52042
Axle and nut, replacement			0.1	80205
Spring, replacement			0.3	5680204



ROCUT® Professional 50TC

Description	Max. Sch. 40 PVC	Max. O.D.	lb	No.
ROCUT® 50TC	1-1/2"	2"	1.4	52010
Spare stainless steel blade			0.4	52011
Axle and nut, replacement			0.1	80205
Spring, replacement			0.3	5685004



new

ROCUT® Professional 63TC

- Teflon coated blade

Description	Max. Sch. 40 PVC	Max. O.D.	lb	No.
ROCUT® 63TC	2"	2-1/2"	1.4	52030
Spare stainless steel blade			0.4	52031
Axle and nut, replacement			0.1	80205
Spring, replacement			0.3	5685004



ROCUT® Professional 75TC

Description	Max. Sch. 40 PVC	Max. O.D.	lb	No.
ROCUT® 75TC	2-1/2"	3"	3.6	52015
Spare stainless steel blade			0.5	52016
Spring, replacement			0.3	5687504

Plastic Pipe Shears



new



Check out this product on YouTube! under ROTHENBERGER Plasticuts



See our other PEX Tools on page 20!

PLASTICUT PEX & CPVC CUTTER

Pipe cutter ideal for use in confined spaces. No force required to operate. Lightweight and simple to use. Cuts PEX and CPVC 1/2" to 1".

Description	Max. O.D.	lb	No.
PLASTICUT, 1/2"	1/2"	0.1	59060
PLASTICUT, 3/4"	3/4"	0.1	59070
PLASTICUT, 1"	1"	0.1	59080
Replacement Blade, 1/2", 3/4", 3 pk.		0.1	59000
Replacement Blade, 1", 3 pk.		0.1	59001

4



ROCUT® 32TC PEX Cutter

New light and sturdy cutter for PE, PEX, PP, CPVC, and multi-layer pipe. Blade is flat to "turn and cut."

Description	Max. O.D.	lb	No.
ROCUT 32TC	1-1/4"	1.6	52040
Replacement Blade			52041



ROCUT® 26TC PEX Cutter

New direct cut action shear with a stainless steel blade for fast and accurate cuts on PE, PEX, PP, and CPVC plastic pipe.

Description	Max. O.D.	lb	No.
ROCUT 26TC	1"	0.8	52005



Direct Cut PEX Shear

New direct cut action shear with a stainless steel blade for fast and accurate cuts on PE, PEX, PP, and CPVC plastic pipe.

Description	Max. O.D.	lb	No.
Direct Cut Shear	1-3/8"	4.5	55089



Economy Plastic Pipe Shears

Standard action cutters provide a fast, clean cut on most types of plastic pipes.

Description	Max. Sch 40 PVC	Max. O.D.	lb	No.
ROCUT® 32	1"	1-1/8"	1.2	55090E
ROCUT® 42	1-1/4"	1-5/8"	1.6	55091E
ROCUT® 63	2"	2-3/8"	3.5	55095E
Replacement Blade for ROCUT 32			0.5	50032
Replacement Blade for ROCUT 42			0.8	50042
Replacement Blade for ROCUT 63			1.5	50063

ROGRIP®

Self-adjusting multi-purpose pliers

Optimal for use on various forms of material. With a perfect grip and improved leverage, the ROGRIP offers many advantages over conventional pliers. Made of drop forged chrome vanadium steel.

- Double hardened teeth:
Firm grip on any surface, even under the toughest conditions

- Automatic fit on various forms of material up to 1-5/8" (42 mm) dia.
One handed operation, even for larger tube diameters



- Twice-hardened:
Long service life

- Ergonomically shaped cushioned handles:
Strong grip, anti-slip

- Finger guard prevents pinching of fingers
Increased job safety



- High quality DURAMANT® surface coating:
Wear-resistant surface protection

- Improved leverage compared to conventional pliers:
Optimum force transmission

Description	L	Max. O.D.	lb	No.
ROGRIP®	10"	1-5/8"	1.0	70558

Grips hexagonal shapes



Grips pipes



Grips sheets



Grips fittings



ROLOCK®

The new ROLOCK® Pliers, a professional-grade water pump pliers with jaw locking system, provide a secure grip on round, square or hex-shaped items with the push of a button.

- Multi-purpose jaws grip round, flat, square or hex items

- 14 groove opening positions:
Opening capacity of 2-1/3"

- Patented enclosed, adjusting lock system provides fast selection of the opening size with the touch of a button

- Non-slip, rubber handle grips:
Secure, anti-slip



- Durable, double-hardened, chrome vanadium steel with black oxide finish:
Resists corrosion



Description	L	lb	No.
ROLOCK®	7"	0.5	70531
ROLOCK®	10"	0.8	70532
ROLOCK®	12"	1.0	70533

Water Pump Pliers

- Strong jaws:
Won't slip, even on smooth surfaces

- Asymmetrical gripping surfaces, rhombus-shaped:
Optimum grip

- Induction hardened teeth with high wear resistance:
Long service life

- Adjustable for 7 sizes, stable, tough:
Variable use

- Ergonomically shaped anti-slip, plastic covered legs:
Firmer grip



- Longer, thinner pliers with measurements for corners:
Ideal for hard to reach places

- Crush and clamp guard:
Protects fingers

L	Max. O.D.	lb	No.
7"	1"	0.5	70521
10"	1-1/4"	0.8	70522
12"	1-1/2"	0.1	70523

Complies with DIN 5231 D, with heavy duty box joint, chrome vanadium steel, drop forged, tempered, polished head and joint

Pipe Wrenches

Adjustable Wrench

Chrome vanadium steel, drop forged, chrome-plated and polished

- Smooth-running, robust roller with minimum play in the sliding guides



L	lb	No.
6"	0.5	70441
8"	0.8	70442
10"	1.0	70443
12"	1.5	70444
15"	2.5	70445

HEAVY DUTY Pipe Wrench



L	Max. O.D.	lb	No.
8"	1"	1.0	70150
10"	1-1/2"	2.0	70151
12"	2"	3.5	70152
14"	2"	4.5	70153
18"	2-1/2"	6.5	70154
24"	3"	10.5	70155
36"	5"	20.0	70156
48"	6"	37.0	70157

Monoblock cast body with high strength, double T profile, forged jaw and hook, fine-polished teeth set against turning direction, induction hardened, tempered, and anti-slip adjustment screw.

Complies with US standard GGG-W-651 Type I Class A

- Spring-supported hook:

One-handed ratchet-like use

- Quick preset of tube diameter using scale on hook

ALUMINUM Pipe Wrench



L	Max. O.D.	lb	No.
10"	1-1/2"	2.0	70159
14"	2"	3.0	70160
18"	2-1/2"	4.0	70161
24"	3"	6.0	70162
36"	5"	11.5	70163
48"	6"	20.0	70164

Features similar to HEAVY DUTY

Complies with US standard GGG-W-651 Type I Class B

- Extremely light aluminum alloy with high strength:

Approx. 40% lighter

- ALUMINUM Pipe Wrench for PVC Coated Conduit has specially designed jaws for gripping coated pipe

Protects plastic coating

ALUMINUM Pipe Wrench for PVC Coated Conduit			
10"	1-1/2"	2.0	P70159C
14"	2"	3.0	P70160C
18"	2-1/2"	4.0	P70161C
24"	3"	6.0	P70162C

Pipe Wrench Parts

Wrench Size	Set of Springs	Nut	Heel Jaw and Pin	Hook Jaw
8"	70170	70180	70190	70200
10"	70171	70181	70191	70201
12"	70172	70182	70192	70202
14"	70173	70183	70193	70203
18"	70174	70184	70194	70204
24"	70175	70185	70195	70205
36"	70176	70186	70196	70206
48"	70177	70187	70197	70207

ROTHENBERGER pipe wrench parts are interchangeable with Ridgid®* and other industry pipe wrenches.

*Ridgid® is a registered trademark of Ridge Tool Co.

Pipe Wrenches / Chain Wrenches

HEAVY DUTY End Pipe Wrench



Features similar to HEAVY DUTY
Complies with US standard GGG-W-651 Type IV

- Offset wrench head:
Ideal for work in confined spaces or close to walls



L	Max. O.D.	lb	No.
10"	1-1/2"	1.7	70166
14"	2"	3.2	70167

ALUMINUM Offset Pipe Wrench



Features similar to HEAVY DUTY
Complies with US standard GGG-W-651 Type I Class B

- Extremely light aluminum alloy with high strength:
Approx. 40% lighter
- Offset wrench head:
Ideal for work in confined spaces or close to walls



L	Max. O.D.	lb	No.
14"	2"	3.0	70115
18"	2-1/2"	4.0	70116

Chain Pipe Wrench 4"



Profile handle made of drop forged, chrome vanadium steel, polished head and powerful chain made of tempered special steel

- With a double-sided teeth surface set against the turning direction:
Works in both directions without re-inserting



L	Max. O.D.	lb	No.
12"	4"	2.0	70235

HEAVY DUTY Chain Pipe Wrench



Very tough design for the most demanding applications, tried and tested in pipeline construction. Forged jaws and handle; replaceable jaws.

- Strong chain made of tempered special steel:
Fits every cross-section
- Double-sided tooth system for ratchet-like use:
For right and left-handed motion



L	Max. O.D.	lb	No.
27"	2-1/2"	6.0	70243
37"	4"	12.0	70244
44"	6"	25.0	70245
50"	8"	33.0	70246
63"	12"	62.0	70247

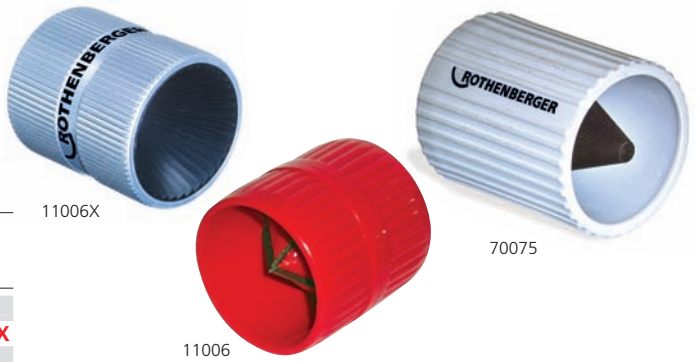
Deburring and Reaming Tools / Basin Wrenches

Universal Internal/External Deburring Tools



Quick and easy deburring

For copper, steel and stainless steel, with polished cutting bit made of hardened special steel



Description	O.D.	lb	No.
Heavy Duty, for copper and stainless steel	3/8" - 2"	0.4	70075
Heavy Duty, for copper and stainless steel	1/8" - 1-3/8"	0.3	11006X
For copper and plastic	1/8" - 1-5/8"	0.3	11006

Ratchet Pipe Reamer 1/4 - 2"

Rapid and clean deburring

For steel tubes, with smooth-running ratchet, cutting bit made of tempered steel



Description	O.D.	lb	No.
Ratchet internal reamer blade	1/4" - 2"	5.9	70289
Spare reamer blade		0.5	70296

Deburring Tools

For fast deburring of edges, tubes and sheets; replaceable blades



Description	lb	No.
Deburring tool with HSS deburring blade	0.1	21660
<i>Note: Blade not replaceable</i>		
Deburring tool with deburring blade no. 1	0.2	21655
HSS deburring blade no. 1 universal, 1 pk.	0.3	21652
HSS deburring blade no. 1 universal, 10 pk.	2.8	21652B

HSS = High Speed Steel

Telescopic Basin Nut Wrench

Chrome-plated, with pivoted reversible jaw

- Telescopic action:
- 4 length adjustments**



Description	lb	No.
Telescopic Basin Wrench, 3/8" - 1-1/4"	2.0	70225
Telescopic Basin Wrench, 1-1/4" - 2-1/2"	3.0	70226

Standard Basin Nut Wrench

Chrome-plated, with pivoted reversible jaw



Description	lb	No.
Basin Nut Wrench, 3/8" - 1-1/4"	2.0	70236



Strap and Fittings Wrench

Made of special aluminum alloy, with replaceable nylon strap.

- Safe to use on chrome-plated fittings:
No damage to polished surfaces

Max. O.D.	inch	lb	No.
3"	12"	1.0	70240
8"	12"	1.3	70241



SANIGRIP PL Plier

Special chrome vanadium steel, drop forged, chrome-plated, 4 adjustable sizes at joint. With teathed grip jaws, SANIGRIP PL features plastic jaws to protect fittings.

- Ideal for plastic screw joints up to dia. 2-3/8" (62 mm):
Optimum grip
- Secure and gentle grip on precious fittings:
No damage to polished surfaces

Description	inch	Max. O.D.	lb	No.
SANIGRIP PL	10"	2-3/8"	0.6	70416
Spare plastic jaws (pair)			0.1	70417



Plumber's 7-piece Repair Kit

All the tools you need for a typical repair job in a sturdy carrying case. Thread, grip and cut 1/2" through 1" pipe.

Kit includes: heavy duty tool bag (**40231**), ROTRAC 42 Plus (**70021**), 18" aluminum pipe wrench (**70161**), ROCUT 50TC shear (**52010**), ROFIRE swivel torch (**35016**), 10" plumber's pliers (**70522**), basin wrench (**70225**)

Description	lb	No.
Plumber's 7-piece Repair Kit	17.8	70615
Tool Bag	4.0	40231

