

Testing and Freezing Technology

Test Pumps	56
Electric Pipe Freezing	57, 58
CO ₂ Pipe Freezing	59
FREEZE-PAK	59

ROTHENBERGER test pumps reliably verify system integrity and help identify leaks so they can be repaired before they cause larger problems.

High-tech freezing equipment allows repairs to plumbing systems with a very short interruption of service.



Test Pumps

RP50-S

Precision Test Pumps

For quick and exact compression testing and leak testing on pipe systems and containers in plumbing and heating installation, and in boiler and pressure vessel manufacture. Ideal for filling solar systems. Indispensable testing device for every installer. Fill and compression test in one work session, with water or oil.

new

Product Profile

TECHNICAL DATA

- Testing and pressure range: 0–60 bar, 1 bar steps
0–860 psi, 20 psi steps
0–6 MPa, 0.1 MPa steps
- Tank capacity: 3.2 gal
- Suction capacity: 1.5 oz/stroke
- Dimensions: 28-1/2" x 6-5/8" x 10-1/4" (L x W x H)
- Connections: R 1/2"

Description	Max. Pressure	lb	No.
RP50 Test Pump	60 bar/860 psi	16.0	60200
RP50-S Repair Kit		0.15	60201

Cut-off valve in monoblock design



- Distortion proof handle with lockable arm
- Ergonomic rubber grip doubles as carrying handle



- High performance: Long stroke for quick filling

- Steel reinforced test hose: No false reading from hose bulging.

- Twin valve system in monoblock design: Constant pressure levels and reduction of leak-prone connections

5

TP25

Test pump for quick compression testing

For leak testing of smaller pipe systems and containers in plumbing and heating installations.

Product Profile

TECHNICAL DATA

- Testing and pressure range: 0–25 bar, 1 bar steps
0–363 psi, 20 psi steps
- Tank capacity: 1.2 gallon
- Suction capacity: 0.67 oz/stroke
- Dimensions: 17-3/8" x 7-7/8" x 9-1/2" (L x W x H)
- Connections: R 1/2"

Description	Max. Pressure	lb	No.
TP25 Test Pump	25 bar/363 psi	16.0	60250
TP25 Repair Kit		0.20	60251

new

- Single-valve system: Simple operation



- Small dimensions: Ideal for tight spaces

- Steel reinforced test hose: No false reading from hose bulging

- Weather- and cold-resistant tank: Durable epoxy coating

Electric Pipe Freezing Systems

ROFROST® TURBO 1-1/4" & 2"

High tech pipe freezing system for copper, steel, and plastic composite pipes

Ideal for maintenance, repair, and expansion work in plumbing and heating installations

Product Profile

FEATURES

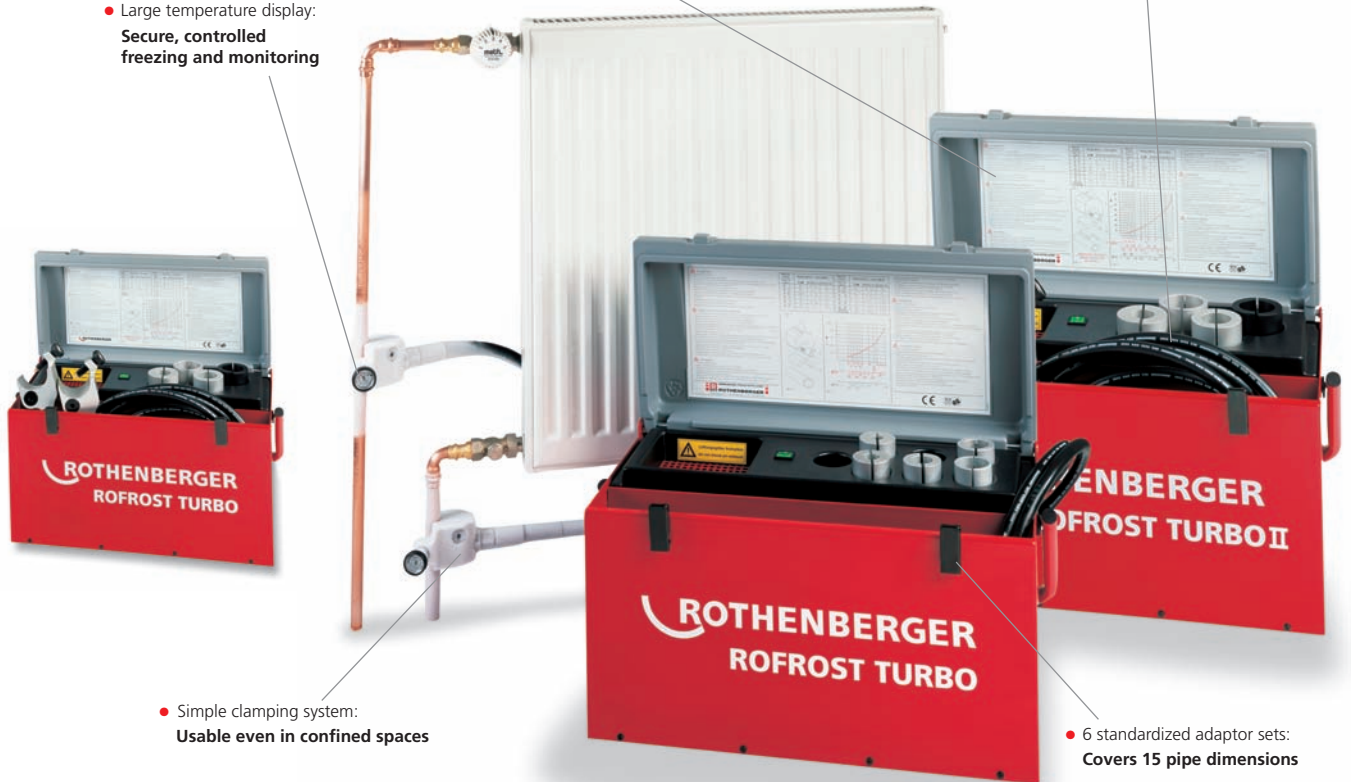
- Ergonomically formed freezing clamps:
Simple clamping, even in confined spaces
- Equal ice build-up on pipe:
Protects materials
- CFC-free refrigerant:
Environmentally friendly
- Fully automatic, controlled freezing:
Saves time and money
- Self-contained freezing unit:
No need to use refrigerant, no transport of steel canisters
- Short freezing times:
Eliminates long interruption of heating or water supply

- Compact design:
Portable use, optimal for service industry



- Plastic capillary pipes:
High flexibility and uninterrupted operation

- Large temperature display:
Secure, controlled freezing and monitoring



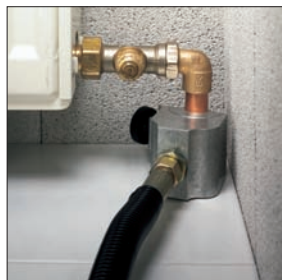
- Simple clamping system:
Usable even in confined spaces

- 6 standardized adaptor sets:
Covers 15 pipe dimensions

Anti-kink, diffusion proof, monotube system with plastic capillary pipes guarantees high flexibility and uninterrupted operation



Excellent for working close to walls or on floors



Use for parallel-running pipes and in confined spaces



Good close to walls, only 2 inches contact surface required



800.545.7698 www.rothenberger-usa.com

ROTHENBERGER

ROFROST Electric Pipe Freezing Systems

ROFROST® TURBO 1-1/4"

Refrigeration set with 2 refrigeration hoses and freezing clamps for

- copper O.D. 3/8" – 1-3/8"
- steel dia. 1/8" – 1-1/4"
- plastic and multilayer composite pipes

Set includes 7 reduction inserts, each with 2 half-shells, sizes II, IV, VI, VII, VIII, X, and XII for copper pipes O.D. 1/2", 5/8", 3/4", 7/8", 1", 1-1/8", 1-3/8", and steel pipes dia. 1/2", 3/4", 1", 1-1/4"

Description	lb	No.
ROFROST® TURBO 1-1/4"	55.0	62202

Reduction Inserts 1-1/4"



Reduction Insert Size	copper pipe O.D.	steel pipe dia.	lb	No.
Size I	3/8"	1/8"	0.2	62217
Size II	1/2"	-	0.2	62211
Size IV	5/8"	-	0.2	62219
Size VI	3/4"	-	0.2	62224
Size VII	7/8"	1/2"	0.2	62214
Size VIII	1"	-	0.2	62226
Size IX	-	3/4"	0.2	62215
Size X	1-1/8"	-	0.2	62227
Size XII	1-3/8"	1"	0.2	62216

ROFROST® TURBO 2"

Refrigeration set with 2 refrigeration hoses and freeze clamps for

- copper O.D. 3/8" – 2-3/8"
- steel dia. 1/8" – 2"
- plastic and multilayer composite pipes

Set includes 4 reduction inserts, each with 2 half-shells, sizes A, D, E, and F for copper pipes O.D. 1-3/8", and steel pipes dia. 3/4", 1", 1-1/4", 1-1/2"

Optional Expansion Set (**62230**) for copper pipes O.D. 1/2", 5/8", 7/8", and steel pipes dia. 1/4", 1/2"

Description	lb	No.
ROFROST® TURBO 2"	55.0	62205

Reduction Inserts 2"



Reduction Insert Size	copper pipe O.D.	steel pipe dia.	lb	No.
Size A	-	3/4"	0.2	62231
Size B	1-1/8"	-	0.2	62232
Size C	1-1/4"	-	0.2	62233
Size D	1-3/8"	1"	0.2	62234
Size E	-	1-1/4"	0.2	62235
Size F	-	1-1/2"	0.2	62236
Size G	2-1/8"	-	0.2	62237
Expansion Set for copper O.D. 1/2", 5/8", 7/8" and steel dia. 1/4", 1/2"	-	-	1.5	62230

The reduction insert Size E also serves as an adaptor piece for fitting ROFROST® TURBO 1-1/4" reduction inserts, from size I - size XII.

5

Space requirements for freezing clamps

ROFROST® TURBO 1-1/4"

A_{min} = 1.1 in
B_{min} = 1.5 in

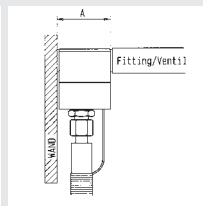
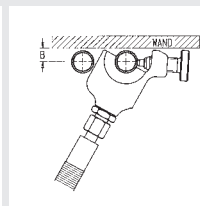
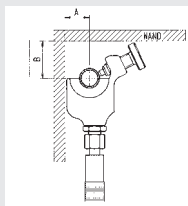
Use on vertical pipes in corners

A_{min} = 2.1 in

Use on pipe wall fittings/valves

B_{min} = .6 in

Use on vertical pipes on walls



ROFROST® TURBO 2"

A_{min} = 1.5 in
B_{min} = 1.8 in

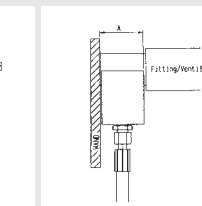
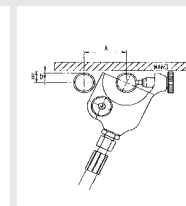
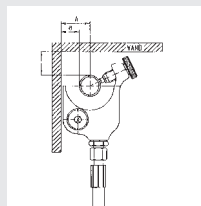
Use on vertical pipes in corners

A_{min} = 2.3 in

Use on pipe wall fittings/valves

B_{min} = .7 in

Use on vertical pipes on walls



ROFROST® Heat Conductive Paste

Description	Content	lb	No.
ROFROST® Heat Conductive Paste	150 ml	0.5	62291

For optimal heat conduction between cold sleeve, reduction insert and pipe surface, residue free work, physiologically neutral.



CO₂ Pipe Freezing

ROFROST® CO₂ Set

Manual freezing set

For quick, easy and CFC-free freezing using carbon dioxide of:
 copper pipes dia. 1/2" – 2-1/8"
 steel pipes dia. 1/8" – 2"
 plastic pipes as well as multilayer composite tubes

Set includes: 2 handles with feed valves (65032), 2 high pressure hoses (65033), 10 prs. of freezer heads (2 for ea. pipe dimension), T-piece for bottle connection (65034), stopper for one-sided freezing (65049), wrench (65045), internal hex screwdriver (65046), plastic case

Description	copper pipe O.D.	steel pipe dia.	lb	No.
ROFROST® CO ₂ Set	1/2" – 2-1/8"	1/8" – 2"	13.0	65030
Handle with feed valve and bayonet connection			0.4	65032
High pressure hose, 6-1/2 ft			0.3	65033
Nozzle and filter piece for feed valve			0.3	65048

- Freezing heads offer constant block clamping of pipe diameter:
No breaking freezing sleeve

- Carbon dioxide offers high refrigeration power up to -79°C/-110°F:
Extremely short freezing times

NOTE: Only use bottles with standpipes



- No emptying of pipes required
Fast, safe application

- Plastic freezer heads:
Efficient freezing in minimal space

ROFROST® Freezing Heads

Made of durable, cold-resistant plastic.

Size No.	copper pipe O.D.	steel pipe dia.	lb	No.
1	1/2"	1/8"	0.5	65035
2	-	1/4"	0.5	65036
3	5/8"	3/8"	0.5	65037
4	3/4" - 7/8"	1/2"	0.5	65038
5	1-1/8"	3/4"	0.5	65039
6	1-3/8"	1"	0.5	65040
7	1-5/8"	1-1/4"	0.5	65041
8	-	1-1/2"	0.5	65042
9	2-1/8"	-	0.5	65043
10	-	2"	0.5	65044

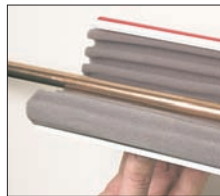


FREEZE-PAK

Instant pipe freezing kit

The FREEZE-PAK is the ideal way to make quick repairs without draining or interruption of water supply. Quick Freeze spray produces a temporary ice plug in plumbing and heating systems that will last up to 30 minutes.

Foam sleeves wrap pipe and are fastened with plastic ties.



Kit includes 1 can Quick Freeze spray (64001), 2 foam pipe jackets, 4 plastic ties

Description	lb	No.
FREEZE-PAK kit	1.7	64004
Foam pipe jacket replacement, 2 pieces	0.3	64002
Quick Freeze Spray replacement, 17.5 oz. (500 g)	1.4	64001

Check out this product on YouTube! under **ROTHENBERGER Freeze-Pak**



Product Profile

FEATURES

- Produces an ice plug in 10 minutes
- Works on copper, iron, lead or plastic pipes
- No need to drain system
- Works vertically and horizontally
- Safe to use - CFC free

TECHNICAL DATA

- Size range: 1/4" - 1" O.D.

Quick Freeze is sprayed into center of foam wraps until frost appears on outside, indicating pipe section is frozen.

Repair is made between 2 frozen pipe sections.



800.545.7698 www.rothenberger-usa.com



