

# Steel Pipe Equipment

<b>Hand Threaders</b>	<b>22</b>
<b>Portable Power Threaders</b>	<b>23, 24</b>
<b>Power Drives</b>	<b>25</b>
<b>Compact Threading Machines</b>	<b>26, 27</b>
<b>COLLINS® High Performance Threading Machines</b>	<b>28 – 30</b>
<b>Threading Accessories</b>	<b>31, 32</b>
<b>Roll Grooving</b>	<b>31</b>
<b>Vises and Stands</b>	<b>33</b>
<b>Machine Die Heads and Dies</b>	<b>34 – 38</b>
<b>Production Cutting Machines</b>	<b>39</b>

3

Whether on-site or in the shop, ROTHENBERGER machines make cutting, threading, and grooving in the gas, plumbing, and heating industries a snap! Cutting and threading up to 6" diameter steel pipe is no problem.

No matter the application or size of the job, ROTHENBERGER has the right machine!



# Hand Threaders

## SUPER CUT

Ratchet Threader



### Quick Change Die Heads

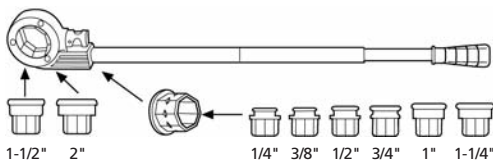
- Positive octagonal universal drive:  
**Secure hold**
- Long pipe guide  
**Perfect centering**

*For precision die heads and dies, see page 34*



### Precision Dies

- High-quality tempered steel:  
**Extremely long life**
- Optimized cutting geometry:  
**Easy to start cut, excellent chip discharge**



### Product Profile

#### FEATURES

- Convenient, lockable ratchet direction reversal
- Secure hold with locking retainer:  
**Simple insertion and removal of die heads**
- Slim, compact shape with excellent overall size; angle requirements of 22.5°:  
**For difficult to reach positions**
- Offset lever:  
**High leverage**
- Fits all ROTHENBERGER hand and electric threaders

#### TECHNICAL DATA

#### Precision thread cutting to approved standards

- NPT      dia. 1/4" - 2"



70905X



**new**

70753

Set includes ratchet handle, die heads, plastic case

Description		lb	No.
SUPER CUT Set	1/2", 3/4", 1" NPT	9.3	<b>70903X</b>
SUPER CUT Set	1/2", 3/4", 1", 1-1/4" NPT	15.0	<b>70901X</b>
SUPER CUT Set	1/2", 3/4", 1", 1-1/4", 1-1/2", 2" NPT	20.0	<b>70905X</b>
SUPER CUT Set	1/2", 3/4", 1", 1-1/4", 1-1/2", 2" NPT for plastic-coated pipe	20.0	<b>P70905C</b>
Ratchet handle No. 1	1/4" - 1-1/4"	4.0	<b>70840X</b>
Ratchet handle No. 2	1-1/2" - 2"	4.0	<b>71272</b>
Die Head Adapter for die heads up to 1-1/4"		2.0	<b>71273</b>
RONOL® Cutting Fluid, 6.7 oz (200 ml)		0.8	<b>65018</b>
Bucket Oiler		20.0	<b>70753</b>

## SUPER CUT Deluxe Threading Kit



70614



**new**

70753

Kit includes SUPER CUT 1-1/4" Ratchet (**70840X**), Quick Change die heads NPT (1/2" **70912X**, 3/4" **70913X**, 1" **70914X**), SUPER 1-1/4" Steel pipe cutter (**70040**), Water Pump pliers 10" (**70522**), 14" Heavy Duty Pipe Wrench (70153), pipe tape, plastic case

Description	lb	No.
SUPER CUT Deluxe Threading Kit	21.0	<b>70614</b>
Bucket Oiler	20.0	<b>70753</b>

# Portable Power Threaders

## SUPERTRONIC 1250

### Portable Compact Threader

Lightweight yet durable, this portable power threader quickly produces 1/2", 3/4", 1" or 1-1/4" threads.

The 1250 features a durable helicoidal power transmission, electric reverse, and light yet strong aluminum and fiberglass body.

Ideal for repair and maintenance of gas lines and boilers.



**For precision die heads and dies, see page 34**



#### Product Profile

#### FEATURES

- Fast and steady production threading up to 1-1/4"
- Electronic push-button forward/reverse control
- Compact dimensions
- Small head
- Lightweight, easy to handle
- Durable
- Fiberglass-reinforced aluminum motor housing

#### TECHNICAL DATA

- NPT Diameter: 1/2", 3/4", 1", 1-1/4"
- Motor: 34 rpm, 5 axle

Standard supply: SUPERTRONIC 1250, forged pipe clamp, precision dieheads (70912, 70913, 70914, 70915), plastic case

Description	lb	No.
SUPERTRONIC 1250, 1/2", 3/4", 1", 1-1/4" NPT	9.4	<b>71453</b>
RONOL® Cutting Fluid, 6.7 oz (200 ml)	0.8	<b>65018</b>
Forged Pipe Clamp, max. 1-1/4"	3.5	<b>71279</b>
Steel Pipe Cutter, 1-1/4"	2.5	<b>70040</b>
Bucket Oiler	20.0	<b>70753</b>

# Portable Power Threaders

## SUPERTRONIC 2000

### Power Threader



- Hardened teeth and jaws on support arm:

**Secure grip in both turning directions**

- Large mechanism for switching direction:  
**Reverses direction when thread is complete**

- Offset die head mounting:  
**Allows threading close to walls**

- Direct seating with locking of tension ring:  
**Die heads are held firmly in place**



71280



71271



71273

## SUPERTRONIC 2000 Set 1/2" - 2"

Set includes SUPERTRONIC 2000, forged pipe clamp (71280), ROFIX Adapter (71271), Precision Die Heads, plastic case

Description	lb	No.
SUPERTRONIC 2000 Set 1/2", 3/4", 1", 1-1/4", 1-1/2", 2" NPT	42.1	<b>71259L</b>
SUPERTRONIC 2000 Set for plastic-coated pipe 1/2", 3/4", 1", 1-1/4", 1-1/2", 2" NPT	42.1	<b>P71259C</b>
RONOL® Cutting Fluid, 6.7 oz (200 ml)	0.8	<b>65018</b>
Forged Pipe Clamp, max. 2"	3.8	<b>71280</b>
Steel Pipe Cutter, 2"	5.5	<b>70045</b>
Bucket Oiler	20.0	<b>70753</b>
Monoblock adapter	2.0	<b>71273</b>
ROFIX Adapter with locking ring	2.3	<b>71271</b>
SUPERTRONIC 2000 machine only	42.1	<b>71259</b>

### Product Profile

#### FEATURES

- Quick and effortless production of safe precision threaded joints to approved standards
- Compact dimensions:  
**Allow for use in difficult to reach positions**
- Dust tight casing with sealed lubrication:  
**Long lifespan, low maintenance**
- High reduction gears with spur wheel teeth; 7 parallel gear shafts, each ball bearing mounted:  
**High, consistent power transmission level when fully loaded**
- Optimized gearing:  
**High performance output with minimal energy consumption**

#### TECHNICAL DATA

- Motor: 1010 W Universal, double insulated with VDE and CEE, interference free
- Threading Speed: 15-25 rpm, 60 rpm rapid reverse

- Compact gear housing with excellent overall size:  
**Ideal for difficult to reach positions (corners, shafts)**

Inserting the die heads



Fits into tight spaces



Gearing



**For precision die heads and dies, see page 34**



71259L



**new**

70753

## MINI-COLLINS®

Puts power back into power threading – thread up to 2" pipe or conduit, 1" bolt or rod, in seconds!



00074

## PNEUMATIC MINI-COLLINS®

ROTHENBERGER's Pneumatic MINI-COLLINS weighs only 27 pounds and is the most portable air-powered threader available!

- For complete safety in hazardous environments such as petroleum and chemical plants, mines or tunnels.
- Reversible, non-sparking air motor develops 500 foot-pounds of torque in either direction
- Cannot be damaged by overload, even when operated to point of stall



00078

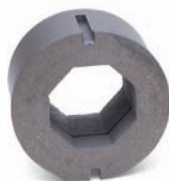


70753

**new**



00077



13158



00117

### Product Profile

#### FEATURES

- Lightweight and engineered to go anywhere – requires only 1-3/4" clearance for working in trenches, overhead, and in tight quarters where only hand tools could be used before
- Convenient maintenance – built-in fill plug eliminates disassembly of gearbox for oiling
- Has the muscle to make any turning job easy – tightens nuts, drives cable pullers, turns hoists and jacks, opens and closes valves, or drives up to 6" geared threaders
- Shock-resistant handle and durable construction provide years of safe, dependable operation

#### TECHNICAL DATA

	MINI-COLLINS®	PNEUMATIC MINI-COLLINS®
Threading Range:		
• Pipe or conduit	1/8" to 2"	1/8" to 2"
• Bolt or rod	1/4" to 1"	1/4" to 1"
• With adapters and geared threader	2-1/2" to 6"	2-1/2" to 6"
Dimensions:		
• Overall length	28"	27"
• Cord length	80"	—
• Motor	115V, 15 amp or 230V, 9 amp, universal AC-DC reversible, 50-60 Hz	Reversible air motor develops 500 ft/lbs, forward and reverse; requires 90-120 PSI (at 60-80 CFM) input pressure
Switches		
• On/Off	Deadman	Safety lever throttle (shuts off when released)
• Directional	Forward, reverse	Forward, reverse

## MINI-COLLINS® Power Drives and Accessories

Description	lb	No.
MINI-COLLINS® Drive, 115V	27.0	<b>00074</b>
Pneumatic Mini-COLLINS® Drive	29.0	<b>00078</b>
MINI-COLLINS® Drive, 230V	27.0	<b>13950</b>
Steel carrying case	5.0	<b>00119</b>
Safevise	5.0	<b>00077</b>
Bucket Oiler	20.0	<b>70753</b>

## Drop Head Adapters

to drive	lb	No.
ROTHENBERGER SUPER CUT (enclosed)	3.0	<b>13158</b>
RIDGID®* 111-R	3.0	<b>00111</b>
RIDGID®* 12-R	<i>No adapter needed</i>	
Square shaft 7/8"	3.0	<b>00116</b>
Square shaft 1" (for geared threader)	4.5	<b>00117</b>
Square shaft 1-1/4"	3.0	<b>00118</b>

\*Ridgid® is a registered trademark of Ridge Tool Co.

# Compact Threading Machines

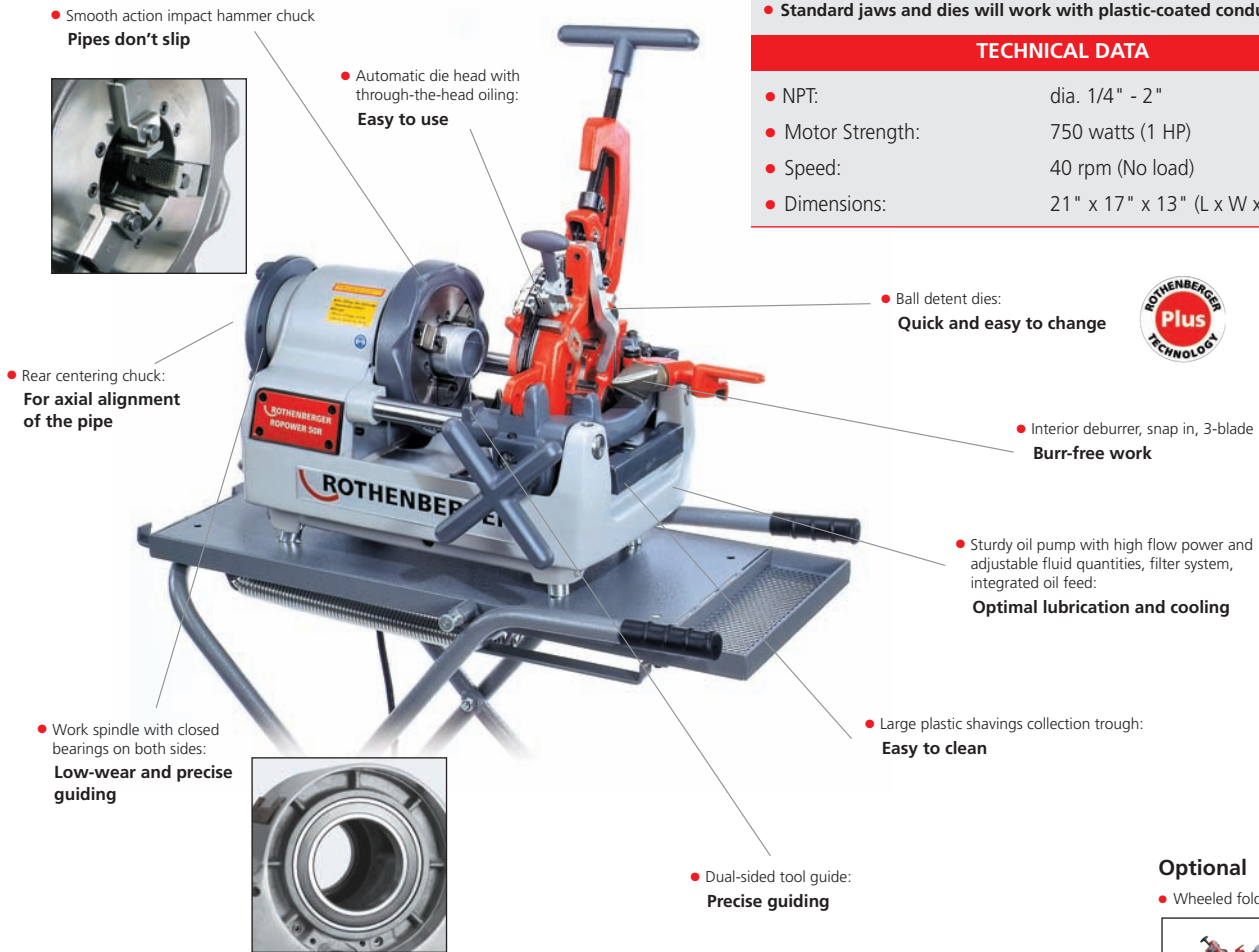
## SUPERTRONIC 2SE / ROPOWER 50R

### Portable Compact Threaders

ROTHENBERGER's portable 2" threading machines offer fast and steady, precision threading, cutting, de-burring, and grooving. The powerful 750-watt (1 HP) motor provides strong turning power with consistent torque for swift, effortless production of accurate, standard pipe and bolt threads. The optional foldable, wheeled workbench makes transport easy, whether on site or in the workshop. Replacing the dies is fast and easy due to unique ball-detent feature.

Check out this product on YouTube! under ROTHENBERGER Threading 

3



### Product Profile

#### FEATURES

- Motor double insulated:  
**Work safer**
- Stable high torque motor:  
**Constant power**
- Offset spindle lubrication:  
**Easy to maintain**
- Geared oil pump with filter system and adjustable fluid level:  
**Constant oil flow**
- Large plastic chip collection tray:  
**Easy to clean**
- Machine slightly angled:  
**Reduced oil consumption, oil moistening in pipe interior is avoided**
- Standard jaws and dies will work with plastic-coated conduit**

#### TECHNICAL DATA

- NPT: dia. 1/4" - 2"
- Motor Strength: 750 watts (1 HP)
- Speed: 40 rpm (No load)
- Dimensions: 21" x 17" x 13" (L x W x H)



### SUPERTRONIC 2SE

The SUPERTRONIC 2SE uses quick-change dies with a ball-detent feature that makes aligning replacement dies in the die head fast and easy. The 2SE die head and dies are compatible with the SUPERTRONIC 4SE threading machine.

**Standard supply:** 2SE machine with automatic die head 1/2"-2" (52500), alloy dies (1/2"-3/4" NPT 89101 and 1"-2" NPT 89102), safety foot switch, set of 4 legs, 1 gallon ROCOOL® oil (01922)

### ROPOWER 50R

The ROPOWER 50R uses RIDGID®-compatible dies with the new quick-change ball detent feature. While other manufacturers' RIDGID® style dies may be used in the 50R die head (56265), only ROTHENBERGER's dies snap into position.

**Standard supply:** ROPOWER 50R, Automatic die head 1/2"-2" (56265), alloy NPT dies (1/2"-3/4" 89162 and 1"-2" 86163), set of 4 legs, safety foot switch, 1 gallon ROCOOL® oil (01922)

\*Ridgid® is a registered trademark of Ridge Tool Co.

See page 35 for cross reference to Ridgid® dies

### Optional

- Wheeled folding stand (56051)

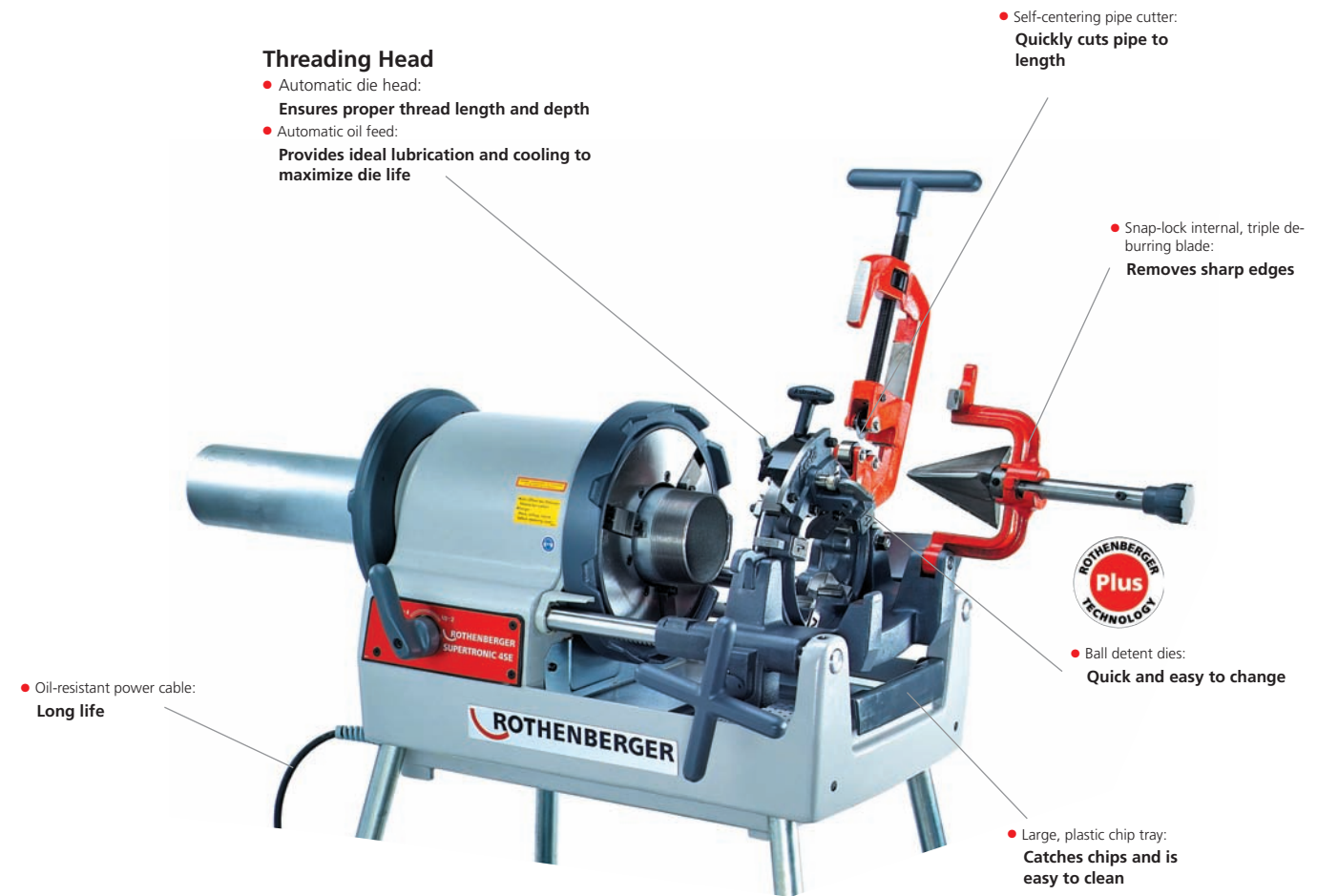


Description	Lb	No.
SUPERTRONIC 2SE with Automatic die head with NPT Alloy dies 1/2" - 2"	97.0	<b>63004</b>
ROPOWER 50R with Automatic die head with NPT Alloy dies 1/2" - 2"	97.0	<b>63005</b>
Wheeled stand	70.0	<b>56051</b>
Mounting Kit for ROGROOVER	4.0	<b>56511</b>
Cutter Wheel	0.5	<b>04510</b>

# Compact Threading Machines

## SUPERTRONIC 4SE

### 4" Threading Machine



#### Threading Head

- Automatic die head:  
**Ensures proper thread length and depth**
- Automatic oil feed:  
**Provides ideal lubrication and cooling to maximize die life**

- Self-centering pipe cutter:  
**Quickly cuts pipe to length**

- Snap-lock internal, triple de-burring blade:  
**Removes sharp edges**



- Ball detent dies:  
**Quick and easy to change**

- Oil-resistant power cable:  
**Long life**

- Large, plastic chip tray:  
**Catches chips and is easy to clean**

#### Product Profile

##### FEATURES

ROTHENBERGER'S SUPERTRONIC 4SE offers fast and steady threading, cutting and de-burring up to 4 inches. The powerful, 2-speed, 1-1/2 hp. motor provides strong turning power with consistent torque for swift, consistent production of accurate pipe threads either on site or in the shop. Replacing the dies is fast and easy with the unique ball detent feature. The machine includes 2 automatic die heads, 3 sets of dies, safety foot switch, and set of 4 legs.

- Easy access to all components:  
**For quick repair**
- Ball detent feature:  
**Allows quick and easy replacement of dies without removing the die head**
- Chuck jaws are quick and easy to change
- Robust oil pump with flow adjustment and filter system:  
**Keeps oil free of impurities**
- **Standard jaws and dies will work with plastic-coated conduit**

##### TECHNICAL DATA

- Dimensions 31" x 21" x 19" (L x W x H)
- Weight: 232 lb.
- Machine Capacity Pipe 1/2"-4"  
Bolt 3/8"-2"
- Motor 1-1/2 hp, Universal Single Phase, 115 volt, 1140 Watt
- Threading Speed 48/18 rpm (2 speed)

#### Additional Features

- Rear centering chuck:  
**For correct axial alignment**
- Smooth action impact hammer chuck:  
**Powerful, no-slip grip**
- Dual tool/feed slide with geared indexing
- Strong, precise work spindle is guided on both sides by enclosed ball bearings
- Safety foot switch:  
**Stops motor in case of emergency**
- Will work with plastic-coated conduit

Description	lb	No.
SUPERTRONIC 4SE 1/2" - 4"	232.0	<b>63006</b>
Automatic die head 1/2" - 2"	18.0	<b>52500</b>
Automatic die head 2-1/2" - 4"	18.0	<b>64350</b>
Alloy Die Set 1/2" - 3/4" NPT	2.0	<b>89101</b>
Alloy Die Set 1" - 2" NPT	2.0	<b>89102</b>
Alloy Die Set for Die Head 64350 only 2-1/2" - 4" NPT	3.0	<b>59912</b>
ROCOOL Thread Cutting Oil 1 gallon	8.0	<b>01922</b>
SUPERJACK Pipe Stand for 1/2" - 8" pipe	25.0	<b>10640</b>
ROGROOVER Mounting Kit for 4SE	9.0	<b>56512</b>
Cutter wheel	0.5	<b>04510</b>
Enclosed, wheeled cabinet	16.5	<b>E-239</b>
Open wheeled stand (with tool tray)	56.0	<b>00548A</b>

# COLLINS® High Performance Threading Machines

## COLLINS® CLASSIC 22A

This top-of-the-range threading machine is suitable for the most demanding pipework applications, on-site threading, prefabrication work, or even production applications. Completely versatile – handles even difficult make-on or breakdown of fittings. High performance output in every way, the result from over 40 years producing the tried and tested COLLINS® pipe threaders.

### Drive Motor

- Heavy duty, 115 V, universal AC/DC, 50/60 Hz. Develops up to 2.3/4 HP
- 6 brush motor for higher torque
- Easy to service
- Left and right hand optional
- 84db on A scale noise level

### Pipe Cutter and Reamer

- Precision pipe cutter with dual guide for accurate pipe cutting
- 5-Blade conical reamer

### No-Load Spindle Speed

- 72 rpm
- Optional 54 and 100 rpm

### Die Heads

- Snap-O-Matic® die heads (2) are standard
- Simple, quick change of dies without time consuming adjustments
- All controls are clearly marked.
- Automatically adjusted thread length
- Adjustable thread depth
- Threading range:  
Pipe or conduit 1/8" to 2"  
Bolt or rod 1/4" to 2 1/4"
- Uniquad® head optional

### HSS Precision Dies

- Long operating life
- Optimum cutting geometry and excellent chip discharge
- Can be resharpened

### Pipe Chuck

- COLLINS® SUPER GRIP chucking system
- R/L chucking
- 4 heavy duty jaws at both front and rear of machine ensure that pipe is automatically gripped and centered.
- Easy to replace jaws (01623) for both metal and plastic-coated pipe
- Optional jaws for plastic-coated pipe. (20533)

### Oiling and Lubrication

- Rugged and proven oil pump
- Automatic oil feed for optimum cooling
- Large, easy-to-empty, chip tray
- 1 gallon oil reservoir
- Use ROCOOL® cutting oil, (01922) a special blend of sulfo-chlorinated mineral oil to ensure superior quality threads and long die life.

### Safety

- All units come with a safety foot switch.

### Dimensions

- 37-1/2" x 13-1/8" x 18-1/2" (L x W x H)
- Carriage travel 11"

### Optional Stands

- Open wheeled stand with tool tray
- Closed wheeled stand with locking tool cabinet



E-239

See page 35 for cross reference to Ridgid®\* dies

Standard Supply: Threading machine (00579) with built-in pipe cutter and reamer, foot-operated safety switch, 2 snap-o-matic die heads (00063, 00066), 2 sets of HSS dies (00028, 00031), 1 gallon oil. (01922)



00579 on 00045 stand

Description	lb	No.
COLLINS® CLASSIC 22A with		
Snap-O-Matic® die heads/dies, 72 rpm, 115V	240.0	00579
Snap-O-Matic® die heads/dies, 100 rpm, 115V	240.0	00587
Snap-O-Matic® die heads/dies, 230V	240.0	00592
UNIQUAD® die heads/dies, 72 rpm, 115V	240.0	00596
Automatic die heads/dies, 72 rpm, 115V	240.0	00597
Automatic ball-detent die head/dies	240.0	00575A
RIDGID® compatible automatic die heads/dies	240.0	00575R
Basic 22A unit without die head/dies	220.0	00585
Replacement jaws (set 8)	5.5	01623
Low indent jaws for plastic-coated pipe (set 8)	5.5	20533
Reamer, 1/8"-2" conical, 5-blade	6.0	00160
Spare cutter wheel (1)	0.3	00157
Spare cutter wheel (6)	1.0	00158
Cutter assembly, wheel type	11.0	00159
Oil sump baffle	4.0	00155
Open wheeled stand with tool tray	54.0	00045
Threader storage cabinet with wheels	165.0	E-239
Waterproof cover	5.0	00154
Mounting Kit for ROGROOVER	7.0	45001
Switch Assembly	10.0	01297
Switch Handle	0.3	1221-H

\*Ridgid® is a registered trademark of Ridge Tool Co.

# COLLINS® High Performance Threading Machines

## RHINO®

### 1/2" to 4" Threading Machine

This is a top-quality threading machine for standard use by plumbing and electrical contractors.

#### Drive Motor

- Heavy Duty, 115 V, AC/DC 50/60 Hz. Develops up to 3 HP
- 6-Brush motor for higher torque
- High speed threading – 25 rpm
- Easy to maintain and service
- 85db max. noise level

#### No Load Spindle Speed

- 25 rpm

#### Pipe Cutter and Reamer

- Precision pipe cutter with dual guide for accurate pipe cutting and control for exact length required
- 5-Blade conical reamer for 1/8" to 2"
- Optional blade reamer for 2-1/2" to 4"

#### Pipe Chuck

- COLLINS® SUPER GRIP chucking system
- R/L chucking
- 4 heavy duty jaws at both front and rear of machine ensure that pipe is automatically gripped and centered

#### Automatic Die Heads

- Automatic 2-1/2" to 4"
- Optional 1/2" to 2" automatic die head, small die head adapter and reamer
- Automatically adjusted thread length
- Threading range with optional package:
  - Pipe or conduit 1/2" to 4"
  - Bolt or rod 5/8" to 2-1/4"

#### Alloy Precision Dies

- Long operating life
- Optimum cutting geometry and excellent chip discharge

#### Oiling and Lubrication

- "Quick Shot" lubricating system
- 2-gallon oil reservoir
- Use ROCOOL® Cutting Oil, (01922) a special blend of sulf-chlorinated mineral oil assures long die life and superior quality threads.

#### Safety

- All units come with safety foot switch.
- Cut-off switch to limit carriage travel

#### Optional Stands

- Open wheeled stand with tool tray
- Closed wheeled stand with locking tool cabinet
- Superjack Pipe Stand with adjustable height and 2000 lb. capacity



Standard Supply: Threading machine (00550) with built-in pipe cutter, reamer (00097), foot operated safety switch, 2-1/2" - 4" die head (64380) and dies (59912)

Description	△ lb	No.
RHINO® complete machine with 2-1/2" - 4" automatic die heads & dies	340.0	00550
RHINO® complete machine with 2-1/2" - 4" automatic die heads & dies for plastic-coated pipe	340.0	P00551C
RHINO® optional 1/2" - 2" package with 1/2" - 2" automatic die heads and dies with 1/2" - 2" conical reamer	27.0	00561
Reamer	5.5	00097
1/8" to 2" conical, 5-blade reamer assembly	5.5	01894
1/8" to 2" reamer cone only	5.5	01894
2-1/2" to 4" twin-edged blade	5.0	00107
2-1/2" to 4" reamer assembly	5.0	00551
Cutter assembly	40.0	00106
Spare cutter wheel (one only)	1.0	00104
Spare Cutter Wheel, 3 pk.	1.0	00105
Open wheel stand (with tool tray)	56.0	00548R
Threader storage cabinet with wheels	165.0	E-239
Mounting kit for ROGROOVER	14.0	45004



E-239

Contact Factory for Special Voltages, Configurations, and Accessories.

800.545.7698 www.rothenberger-usa.com



# COLLINS® High Performance Threading Machines

## Product Profile

### TECHNICAL DATA

- Range Pipe or conduit 1/2" - 4"  
Bolt or rod 19-76 mm, 5/8" - 3"
- Dimensions 60" x 30" x 44-1/2" (L x W x H)  
Height to center line of spindle 35-1/2"  
Carriage travel 13"
- Motor 5 H.P, 230/460V 3 phase, 50-60 Hz 1170 rpm  
(instant reversing)  
Optional 5 H.P, 230/460V 1 phase, 50-60 Hz 1170 rpm  
Optional 10 HP, 230/460V, 3 phase, 50-60 Hz, 1800 rpm
- Spindle speed while threading 1/2"-1" 48 rpm  
1-1/4"-2" 26 rpm  
2-1/2"-3" 16 rpm  
3-1/2"-4" 12 rpm
- Switches Three-station push button switch (forward-stop-release)  
Optional toggle type (right hand-left hand)
- Starter Magnetic with thermal overload
- Oil Reservoir 5 gallon capacity

## 44A 4" THREAD-O-MATIC®

Top-of-the-line high production unit with three Dual (1/2"-3/4", 2-1/2"-3", and 3-1/2"-4") and one Quad (1"-2") Snap-O-Matic® die heads and NPT High Speed dies. Includes small die head adapter and 1/2"-2" cone reamer assembly.

The 44A's heavy duty construction includes welded steel plate frame and base.

*This machine is built to order—please call for lead time*



3

Description	lb	No.
44A Thread-O-Matic®	1212.0	00039

## 66A 6" THREAD-O-MATIC®

Standard unit with one Quad (1"-2"), two Dual (2-1/2"-3", 3-1/2"-4"), and two Mono (5"-6") Snap-O-Matic® die heads and NPT High Speed dies. Includes small die head adapter, 1/2"-2" cone reamer assembly, and 1/2"-2" wheel-type cutter assembly.

Engineered with the same heavy duty construction as the 44A, the 66A features a welded steel plate frame and base.

*This machine is built to order—please call for lead time*

Check out this product on YouTube! under ROTHENBERGER Threading **VIDEO**



## Product Profile

### TECHNICAL DATA

- Range Pipe or conduit 1" - 6"  
Bolt or rod 32-90 mm, 1-1/4" - 4"
- Dimensions 48-3/8" x 30" x 45-3/4" (L x W x H)  
Height to center line of spindle 36-3/4"  
Carriage travel 10"
- Motor 5 HP, 230/460V 3 phase, dual-speed, 50-60 Hz 1170 rpm  
(instant reversing)
- Spindle speed while threading 1/2" - 2" 62 rpm  
2-1/2" - 3" 32 rpm  
3-1/2" - 4" 16 rpm  
5" - 6" 11 rpm
- Switches Three-station push button switch (forward-stop-release)  
Optional toggle type (right hand-left hand)
- Starter Magnetic with thermal overload
- Oil Reservoir 5 gallon capacity

Description	lb	No.
66A THREAD-O-MATIC®	1700.0	00174

# THREADING ACCESSORIES & ROLL GROOVING

## Nipple Chucks

1/2" - 2"

Nipple chucks convert unthreaded or short pipe lengths into useful close-threaded nipples

For 1/2" - 2" pipe — up to schedule 40 (00088, 00089)

Faster and more economical to use than nipple chuck adapter systems

2-1/2" to 4" and 5" to 6"

Patented mechanism expands and self-locks pipe from inside for work on short pipe lengths

2-1/2" - 4" pipe nipple chuck assembly (00072, 00098)

5" to 6" nipple chuck assembly can be used on both conduit and pipe (00073)



Check out this product on YouTube! under ROTHENBERGER Nipple Chucks



Description	lb	No.
<b>For use with PANTHER, 1SE, 2SE, 50R, 4SE:</b>		
NIPPLE MAX Set, 1/2" - 2"	16.0	00088
Nipple Chuck, 1/2"	0.9	00184
Nipple Chuck, 3/4"	1.2	00185
Nipple Chuck, 1"	1.6	00186
Nipple Chuck, 1-1/4"	2.2	00187
Nipple Chuck, 1-1/2"	2.6	00188
Nipple Chuck, 2"	4.3	00189
External Nipple Chuck, 1/2" - 2" Sch. 80 pipe	15.0	01850
<b>For use with RHINO®, 22A, 33A, 44A, 66A:</b>		
Nipple Chuck, 1/2"	0.9	00190
Nipple Chuck, 3/4"	1.2	00191
Nipple Chuck, 1"	1.6	00192
Nipple Chuck, 1-1/4"	2.2	00193
Nipple Chuck, 1-1/2"	2.6	00194
Nipple Chuck, 2"	4.3	00195
NIPPLE MAX Set, 1/2" - 2", extension bar	???	00199
NIPPLE MAX Set, 1/2" - 2"	16.0	00089
External Nipple Chuck, 1/2" - 2" Sch. 80 pipe	15.0	01850
<b>For use with 33A, 44A, 66A:</b>		
Nipple Chuck Assembly for 2-1/2"-4" pipe	43.0	00072
Nipple Chuck Assembly for 2-1/2"-4" conduit	50.0	00098
<b>For use with all Collins machines:</b>		
Nipple Chuck Assembly for 5" - 6"	50.0	00073



00072



00073

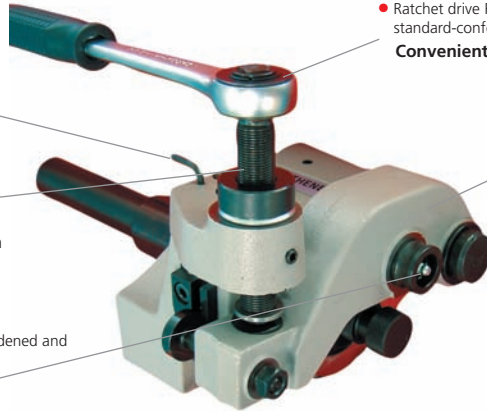


## ROGROOVER 6"

Portable rolling groover for standard and thin-walled steel pipes up to 6" (150 mm).

Particularly suitable for installations, sprinkler systems, larger heating units, and in industrial use, as well as for quick connection of pipes anywhere welding is not allowed. Lightweight and compact design.

- Allen key mount: **Always on hand**
- Ratchet drive R/L for adjusting the depth of standard-conforming groove: **Convenient, easy and fast**
- Lightweight aluminum casing: **Easy to transport**
- Spacer for standard groove depths: **Adjustable and finely-controlled arrester for consistent groove depth**
- Easy assembly/dismantling of the case-hardened and knurled pressure and drive rollers: **Long life**



For Model	lb	No.
ROGROOVER, machine ONLY	27.9	8870922

Please select correct mounting kit below:

ROPOWER 50R and SUPERTRONIC 2SE	8.5	56511
COLLINS® CLASSIC 22A	8.5	45001
RIDGID®* 300	8.5	45002
RHINO®	8.5	45004
SUPERTRONIC 4SE	9.0	56512
44A	9.0	45005

\*Ridgid® is a registered trademark of Ridge Tool Co.



# Threading Accessories

3



65008



65013

## RONOL®

### High-performance cutting oil

- Mineral oil basis  
**For threading of all materials, including stainless steel**

Mineral-based threading oils may not be permissible in drinking water installations — Please check the pertinent standards in your area.

Description	Contents	lb	No.
RONOL® Spray	6.8 oz. (200 ml)	0.6	<b>65018</b>
RONOL® Spray can	20.3 oz. (600 ml)	1.7	<b>65008</b>

## RONOL® SYN

### High-performance cutting fluid

- No mineral oils, purely synthetic:  
**Developed and approved for drinking water and plumbing installations.**

Description	Contents	lb	No.
RONOL® SYN Spray can	20.3 oz. (600 ml)	1.7	<b>65013</b>



01922

00002



**new**

70753

## ROCOOL® Cutting Oil

Special blend of sulfo-chlorinated mineral oil assures long die life and superior quality threads. ROCOOL® cutting oil and automatic through-the-die-head oil flow makes it impossible to cut a dry thread.

Description	lbs	No.
ROCOOL® Cutting Oil (1 gallon)	8.0	<b>01922</b>
ROCOOL® Cutting Oil (six 1 gallon containers)	48.0	<b>00001</b>
ROCOOL® Cutting Oil (5 gallons)	40.0	<b>00002</b>
ROCOOL® Cutting Oil (55 gallons)	480.0	<b>00003</b>
Bucket Oiler	20.0	<b>70753</b>



## Safety Foot Switch

For all ROTHENBERGER threading machines.

Corresponds to industrial associations' safety and accident requirements, with oil-proof rubber cable and plug.

Model	lb	No.
3 step, with emergency stop switch, 115V	5.0	<b>00161</b>

## Tribench with 6" Chain Vise

- Sturdy, one-piece steel frame:  
**Easily folds for transport**
- Includes holes and slots:  
**For bending, cutting, or attaching tools**
- Integrated chain vise:  
**Up to 6" pipe capacity.**
- Interchangeable jaws:  
**Works with Ridgid®\* 460 model**
- Ceiling brace for overhead support of the stand:  
**Secure frame even during difficult work**



Description	Size	lb	No.
Tribench with chain vise	1/8" - 6"	48.0	<b>70752</b>

## Top Screw Cam Lock Vise

Tough, powerful, bending device and tube support, forged and hardened, wear-resistant jaws, powerful chain

- V-shaped support:  
**Prevents bending during clamping**
- **Universal vise attachment**
- Offset lever and pre-tensioning screw:  
**Quick fastening**



Description	lb	No.
Vise, 1/8" - 6" O.D.	20.5	<b>70716</b>

## SUPERJACK Pipe Stands

Supports full lengths of pipe, 1/2" -8", when using pipe threading machines

- Height capacity: 27" -50"
- Weight capacity: 2,500 lb. max
- Folding stand includes carrying handle

Model	lb	No.
SUPERJACK with V-Head	25.0	<b>10640</b>
SUPERJACK with Ball Transfer Head	29.0	<b>00101</b>
Folding SUPERJACK with V-Head	26.0	<b>10641</b>
Folding SUPERJACK with Ball Transfer Head	30.0	<b>10642</b>
One set of Ball Transfer Head	2.45	<b>00100</b>



## Bench Yoke Vise

Foldable, with automatic closing hook, milled and hardened upper and lower support jaw, powerful smooth-running spindle

Description	lb	No.
Bench Yoke Vise, 1/8" - 4" O.D.	25.0	<b>70711</b>



\*Ridgid® is a registered trademark of Ridge Tool Co.

# Die Heads & Dies

## Precision Die Heads

For SUPERTRONIC 1250, 2000 and SUPER CUT models.

Feature enlarged shaving discharge chambers for faster threading, strengthened locking plate and precise die seating.



Size	NPT	For Plastic-coated pipe, NPT	lb
1/4"	<b>70907X</b>	—	1.3
3/8"	<b>70908X</b>	—	1.3
1/2"	<b>70912X</b>	<b>P70912C</b>	1.5
3/4"	<b>70913X</b>	<b>P70913C</b>	1.5
1"	<b>70914X</b>	<b>P70914C</b>	2.0
1-1/4"	<b>70915X</b>	<b>P70915C</b>	2.3
1-1/2"	<b>70849X</b>	<b>P70849C</b>	5.5
2"	<b>70850X</b>	<b>P70850C</b>	6.0

## Precision Threading Dies

### Precision Dies

Gentle first cut, extreme long life, 4 pieces/pack.

Achieve optimal results with Original ROTHENBERGER threading fluid!



Description	lb	No.
1/4" NPT	0.3	<b>70916X</b>
3/8" NPT	0.3	<b>70917X</b>
1/2" NPT	0.3	<b>70918X</b>
3/4" NPT	0.3	<b>70919X</b>
1" NPT	0.3	<b>70920X</b>
1-1/4" NPT	0.3	<b>70921X</b>
1-1/2" NPT	0.3	<b>70945X</b>
2" NPT	0.4	<b>70946X</b>

## PANTHER®, COLLINS® CLASSIC 22A

### Snap-O-Matic® Die Heads and Dies



### Snap-O-Matic® Die Head

Available in two-position or four-position settings up to 2". See following pages for the right part number for use with your machine.

Description	1/8"	1/4" & 3/8"	1/2" & 3/4"	1" & 1-1/4"	1-1/2" & 2"	1" - 2"	lb
Die Head, NPT	<b>00061</b>	<b>00062</b>	<b>00063</b>	<b>00064</b>	<b>00065</b>	<b>00066</b>	10.0
Dies, NPT	<b>00029</b>	<b>00030</b>	<b>00031</b>	<b>00023</b>	<b>00024</b>	<b>00028</b>	1.0
Dies, NPT Stainless	<b>00225</b>	<b>00226</b>	<b>00227</b>	<b>00053</b>	<b>00054</b>	—	1.0
Die Head, NPSM	<b>00202</b>	<b>00201</b>	<b>00200</b>	—	—	<b>00203</b>	10.0
Dies, NPSM	<b>00303</b>	<b>00304</b>	<b>00302</b>	—	—	<b>00301</b>	1.0
Dies, Plastic	—	—	<b>02265</b>	—	—	<b>02391</b>	1.0

### Automatic Opening Pipe Die Heads and Dies



Special die head cuts pipe thread lengths the same, time after time — a hardened steel trip trigger automatically opens at the desired or standard thread length. Single-lever motion sizes and closes the die head. The trigger can be swiveled out of position for long-running threads. Available for die sizes 1/2" – 3/4" or 1" – 2".

Description	1/2" & 3/4"	1" & 1-1/4"	1-1/2" & 2"	1" - 2"	lb
Die Head	<b>00221</b>	<b>00221</b>	<b>00221</b>	<b>00221</b>	10.0
Dies, NPT	<b>00027</b>	<b>00023</b>	<b>00024</b>	<b>00028</b>	1.0
Dies, NPSM	<b>00300</b>	<b>00301</b>	—	—	1.0

### Uniquad® Pipe Die Heads and Dies



**Uniquad® Die Head:** Fully adjustable, truly versatile die head for up to 2" pipe and 2-1/4" bolt. Sizing is manual, but still a simple operation.

### For threading pipe

Uniquad® heads use four sets of interchangeable high-speed steel dies: 1/8", 1/4" – 3/8", 1/2" – 3/4", or 1" – 2"

Description	1/8"	1/4" & 3/8"	1/2" & 3/4"	1" & 1-1/4"	1-1/2" & 2"	1" - 2"	lb
Die Head	<b>00222</b>	<b>00222</b>	<b>00222</b>	<b>00222</b>	<b>00222</b>	<b>00222</b>	10.0
Dies, NPT	<b>00025</b>	<b>00026</b>	<b>00027</b>	<b>00023</b>	<b>00024</b>	<b>00028</b>	1.0
Dies, NPT Stainless	<b>00050</b>	<b>00051</b>	<b>00052</b>	<b>00053</b>	<b>00054</b>	—	1.0
Dies, NPSM	<b>00303</b>	<b>00304</b>	<b>00300</b>	—	—	<b>00301</b>	1.0
Dies, Plastic	<b>02581</b>	<b>02582</b>	<b>02583</b>	—	—	<b>02391</b>	1.0

# Die Heads & Dies

## PANTHER®, COLLINS® CLASSIC 22A, continued

### Uniquad® Bolt Die Heads and Dies

**Uniquad® Die Head:** Fully adjustable, truly versatile die head for up to 2" pipe and 2-1/4" bolt. Sizing is manual, but still a simple operation.

#### For threading bolt

Uses either left-hand or right-hand dies to 2-1/4".

Description	1/4"	5/16"	3/8"	7/16"	1/2"	9/16"	5/8"	3/4"	7/8"	1"	lb
Die Head	00222	00222	00222	00222	00222	00222	00222	00222	00222	00222	10.0
Dies, UNC	00004	00005	00006	00007	00008	00009	00010	00011	00012	00013	1.0
Dies, UNF	00340	00341	00342	00343	00344	00345	00346	00347	00348	00349	1.0

Description	1-1/8"	1-1/4"	1-3/8"	1-1/2"	1-5/8"	1-3/4"	1-7/8"	2"	2-1/4"	lb
Die Head	00222	00222	00222	00222	00222	00222	00222	00222	00222	10.0
Dies, UNC	00014	00015	00016	00017	00018	00019	00020	00021	00022	1.0
Dies, UNF	00350	00351	00352	00353	00354	00355	00356	00357	-	1.0

## RHINO®, 4SE, 2SE, and 1SE

### Automatic Opening Pipe Die Heads and Dies

#### Manual NPSM Pipe Die Heads and Dies.

Manual die heads for parallel NPSM pipe threads from 1/2" - 3".



52500

High Performance Automatic die heads with quick Snap-O-Matic® type size selection open automatically at the desired or standard thread length. Depth of thread can be adjusted for individual sizes and moves the die head position for long-running threads.

Description	Use on	1/4"	3/8"	1/2"	3/4"	1"	1-1/4"	1-1/2"	2"	2-1/2"	3"	4"	lb
Die Head, NPT, Manual	2SE	20165	20165	-	-	-	-	-	-	-	-	-	11.0
Dies, NPT, Alloy	1SE	89100	89100	89120	89120	89121	-	-	-	-	-	-	1.0
Die Head, NPT	1SE	-	-	52091	52091	52091	52091	52091	52091	-	-	-	18.0
Die Head, NPT	2SE, 4SE, RHINO®	-	-	52500	52500	52500	52500	52500	52500	-	-	-	18.3
Dies, NPT, Alloy	2SE, 4SE, RHINO®	-	-	89101	89101	89102	89102	89102	89102	-	-	-	1.0
Die Head, NPT	4SE, RHINO®	-	-	-	-	-	-	-	-	64350	64350	64350	20.8
Dies, NPT, Alloy	4SE, RHINO®	-	-	-	-	-	-	-	-	59912	59912	59912	3.0
Die Head, NPSM, Manual	2SE, 4SE, RHINO	-	-	20171	20171	20171	20171	20172	20172	20172	20172	-	20.0
Dies, NPSM, Alloy	2SE, 4SE, RHINO	-	-	89148	89148	89149	89149	89150	89150	89151	89151	-	3.0

Note: alloy dies are not resharpenable.

## RIDGID®\* Style

### Universal "R" Series Dies

Description	RO part number	RIDGID® part number
1/2-3/4" Alloy Dies NPT	89162	47745
1-2" Alloy Dies NPT"	89163	47750
1/4"-3/8" H.S. Steel Dies NPT"	56383	47760
1/2-3/4" H.S. Steel Dies NPT	00125	47765
1-2" H.S. Steel Dies NPT"	00126	47770
1/4-3/8" Stainless Steel Dies NPT	00217	47780
1/2-3/4" Stainless Steel Dies NPT	00218	47785
1-2" Stainless Steel Dies NPT"	00219	47790

### Universal "R" Series Die Head

Will accept "R"-style dies from 1/8" - 2" NPT for the PANTHER and ROPOWER 50R

Description	RO part number
Die Head 50R Manual 1/4"-3/8"	00121
Die Head Panther Manual 1/4"-3/8"	05600
Die Head 50R Automatic 1/2"-2"	56265
Die Head Panther 1/2"-2"	05600

\*Ridgid® is a registered trademark of Ridge Tool Co.

# Die Heads & Dies

## 2SE and 50R for Bolt Threads

Manual Die Head for bolt threading up to 1" on 2SE and ROPOWER 50R machines

### Manual Opening Die Head and Dies

Description	1/2"	5/8"	3/4"	7/8"	1"	1-1/8" - 1-1/4"	1-3/8" - 1-1/2"	⚖ lb
Die Head	<b>20160</b>	<b>20160</b>	<b>20160</b>	<b>20160</b>	<b>20160</b>	<b>20162</b>	<b>20162</b>	8.5
Dies, UNC, Alloy	<b>89016</b>	<b>89017</b>	<b>89018</b>	<b>89019</b>	<b>89020</b>	<b>89197</b>	<b>89198</b>	1.0

3

## 33A and 44A Thread-O-Matic

### Snap-O-Matic® Pipe Die Heads and Dies



00066

### Large Snap-O-Matic® Die Head

Available in two-position in 2-1/2" - 4" for 33A and 44A.

Description	1/2 & 3/4"	1" & 1-1/4"	1-1/2" & 2"	1" - 2"	2-1/2" - 3"	3-1/2" - 4"	⚖ lb
Die Head, NPT	<b>00063</b>	<b>00064</b>	<b>00065</b>	<b>00066</b>	<b>00055</b>	<b>00057</b>	35.0
Dies, NPT	<b>00031</b>	<b>00023</b>	<b>00024</b>	<b>00028</b>	<b>00041</b>	<b>00042</b>	5.0
Dies, NPT Stainless	<b>00227</b>	<b>00053</b>	<b>00054</b>	-	<b>00047</b>	<b>00048</b>	5.0
Die Head, NPSM	<b>00200</b>	-	-	<b>00203</b>	<b>00205</b>	<b>00207</b>	35.0
Dies, NPSM	<b>00302</b>	-	-	<b>00301</b>	<b>00305</b>	<b>00306</b>	5.0
Dies, Plastic	<b>02265</b>	-	-	<b>02391</b>	<b>02364</b>	<b>06676</b>	5.0

### Uniquad® & Snap-O-Matic® Bolt Die Heads & Dies

Description	5/8"	3/4"	7/8"	1"	1-1/8"	1-1/4"	1-3/8"	1-1/2"	⚖ lb
Die Head	<b>00222</b>	<b>00222</b>	<b>00222</b>	<b>00222</b>	<b>00222</b>	<b>00222</b>	<b>00222</b>	<b>00222</b>	10.0
Dies, UNC	<b>00010</b>	<b>00011</b>	<b>00012</b>	<b>00013</b>	<b>00014</b>	<b>00015</b>	<b>00016</b>	<b>00017</b>	1.0
Dies, UNF	<b>00346</b>	<b>00347</b>	<b>00348</b>	<b>00349</b>	<b>00350</b>	<b>00351</b>	<b>00352</b>	<b>00353</b>	1.0

Description	1-5/8"	1-3/4"	1-7/8"	2"	2-1/4"	2-1/2"	2-3/4"	3"	⚖ lb
Die Head	<b>00222</b>	<b>00222</b>	<b>00222</b>	<b>00222</b>	<b>00222</b>	<b>00223</b>	<b>00223</b>	<b>00223</b>	10.0
Dies, UNC	<b>00018</b>	<b>00019</b>	<b>00020</b>	<b>00021</b>	<b>00022</b>	-	-	-	1.0
Dies, UNF	<b>00354</b>	<b>00355</b>	<b>00356</b>	<b>00357</b>	-	-	-	-	1.0
Die Head Bolt	-	-	-	-	-	<b>00223</b>	<b>00223</b>	<b>00223</b>	10.0
Dies, UNC RH only	-	-	-	-	-	<b>00330</b>	<b>00331</b>	<b>00332</b>	1.0

# Die Heads & Dies

## 66A Thread-O-Matic

### Snap-O-Matic® Pipe Die Heads and Dies



00059

### Large Snap-O-Matic® Die Head

Available in two-position up to 4" and single position for 5" and 6"

Description	1" - 1-1/4"	1-1/2" - 2"	1' - 2"	2-1/2" - 3"	3-1/2" - 4"	5"	6"	lb
Die Head, NPT	00064	00065	00066	-	-	-	-	10.0
Dies, NPT	00023	00024	00028	-	-	-	-	1.0
Dies, NPT Stainless	00053	00054	-	-	-	-	-	1.0
Die Head, NPT	-	-	-	00056	00058	-	-	35.0
Dies, NPT	-	-	-	00041	00042	-	-	5.0
Dies, NPT Stainless	-	-	-	00047	00048	-	-	5.0
Die Head, NPT	-	-	-	-	-	00059	00060	54.0
Dies, NPT	-	-	-	-	-	00043	00043	6.0
Dies, NPT Stainless	-	-	-	-	-	00049	00228	6.0
Die Head, NPSM	-	-	00203	-	-	-	-	10.0
Dies, NPSM	-	-	00301	-	-	-	-	1.0
Die Head, NPSM	-	-	-	00206	00208	-	-	35.0
Dies, NPSM	-	-	-	00305	00306	-	-	5.0
Die Head, NPSM	-	-	-	-	-	00204	00209	54.0
Dies, NPSM	-	-	-	-	-	00307	00307	6.0

### Uniquad® Pipe Die Heads & Dies



00222

### Uniquad® Die Head

Fully adjustable, truly versatile die head for up to 2" pipe and 2-1/4" bolt. Sizing is manual, but still a simple operation.

#### For threading pipe

Uniquad® head uses four sets of interchangeable high-speed steel dies: 1/8", 1/4" - 3/8", 1/2" - 3/4", 1" - 2".

Description	1" - 1-1/4"	1-1/2" - 2"	1" - 2"	lb
Die Head	00222	00222	00222	10.0
Dies, NPT	00023	00024	00028	1.0
Dies, NPT Stainless	00053	00054	-	1.0
Dies, NPSM	-	-	00301	1.0

### Automatic Opening Pipe Die Heads & Dies



00221

Special die head cuts pipe thread lengths the same, time after time — a hardened steel trip trigger automatically opens at the desired or standard thread length. Single-lever motion sizes and closes the die head. The trigger can be swiveled out of position for long-running threads. Available for die sizes 1/2" - 3/4" or 1" - 2".

Description	1" - 1-1/4"	1-1/2" - 2"	1" - 2"	lb
Die Head	00221	00221	00221	10.0
Dies, NPT	00023	00024	00028	1.0
Dies, NPSM	-	-	00301	1.0

# Die Heads & Dies

## 66A Die Heads & Dies, continued

### Uniquad® Bolt Die Heads & Dies



#### Uniquad® Die Head

Fully adjustable, truly versatile die head for up to 2" pipe and 2-1/4" bolt. Sizing is manual, but still a simple operation.

#### For threading bolt

Uses either left-hand or right-hand dies to 2-1/4".

Description	1-1/4"	1-3/8"	1-1/2"	1-5/8"	1-3/4"	1-7/8"	2"	2-1/4"	lb
Die Head	00222	00222	00222	00222	00222	00222	00222	00222	10.0
Dies, UNC	00015	00016	00017	00018	00019	00020	00021	00222	1.0
Dies, UNF	00351	00352	00353	00354	00355	00356	00357	-	1.0

3

### Snap-O-Matic® Bolt Die Heads & Dies

Description	2-1/2"	2-3/4"	3"	3-1/4"	3-1/2"	3-3/4"	4"	lb
Die Head, Bolt 66A	00224	00224	00224	00224	00224	00224	00224	35.0
Dies, UNC Right Hand only	00330	00331	00332	00333	00334	00335	00336	5.0

## Grooving and Beveling Die Heads & Tools

Size	Head	Centering Dies	Grooving & Cutting Bit	Cutting Only	Double Bevel 45	Double Bevel 37-1/2"	Saran Tools
3/4" - 2" 22A, 33A, 44A	00471	00489	00477 (Sch. 40 & 80)	00478 (Sch. 40 & 80)	00480 (Sch. 40 & 80)	00479 (Sch. 40 & 80)	00481 (Sch. 40)
1" - 2" All Units	00470	00488	00477 (Sch. 40 & 80)	00478 (Sch. 40 & 80)	00480 (Sch. 40 & 80)	00479 (Sch. 40 & 80)	00481 (Sch. 40)
2-1/2" - 3" 33A, 44A	00472	00490	00482 (Sch. 40 & 80)	00483 (Sch. 40, 80, 160)	00486 (Sch. 40)	00484 + 00485 (Sch. 40) (Sch. 40 - 160)	00487 (Sch. 40)
2-1/2" - 3" 66A	00475	00490	00482 (Sch. 40 & 80)	00483 (Sch. 40, 80, 160)	00486 (Sch. 40)	00484 + 00485 (Sch. 40) (Sch. 40 - 160)	00487 (Sch. 40)
3-1/2" - 4" 33A, 44A	00473	00491	00482 (Sch. 40 & 80)	00483 (Sch. 40, 80, 160)	00486 (Sch. 40)	00484 + 00485 (Sch. 40) (Sch. 40 - 160)	00487 (Sch. 40)
3-1/2" - 4" 66A	00476	00491	00482 (Sch. 40 & 80)	00483 (Sch. 40, 80, 160)	00486 (Sch. 40)	00484 + 00485 (Sch. 40) (Sch. 40 - 160)	00487 (Sch. 40)
5" - 6" 66A	00474	00492	00482 (Sch. 40 & 80)	00483 (Sch. 40, 80, 160)	00486 (Sch. 40)	00484 + 00485 (Sch. 40) (Sch. 40 - 160)	00487 (Sch. 40)
2-1/2" - 3" RHINO®	00574	00490	00482 (Sch. 40 & 80)	00483 (Sch. 40, 80, 160)	00486 (Sch. 40)	00484 + 00485 (Sch. 40) (Sch. 40 - 160)	00487 (Sch. 40)
3-1/2" - 4" RHINO®	00575	00491	00482 (Sch. 40 & 80)	00483 (Sch. 40, 80, 160)	00486 (Sch. 40)	00484 + 00485 (Sch. 40) (Sch. 40 - 160)	00487 (Sch. 40)
small Die Head Adaptor RHINO® (cut grooving)	00558						

# Production Cutting Machines

## COLLINS E-Z CUTTER®

The fastest 100 pound machine you can buy!

This fast, high-volume, production cutter makes quick work of 1/4" - 4" pipe and 5/8" - 4-1/2" tubing. The E-Z Cutter® is built to withstand everyday knocks and abuses yet light enough to set up anywhere.

### Product Profile

#### FEATURES

- Universal AC/DC motor provides a full 1/2 HP for all-day production needs
- Gear-driven rollers turn the work for true perpendicular cutting
- Ball-bearing assembled cutter wheel revolves freely for even wear
- High-speed tool-steel cutter wheels provide thousands of cuts with no external burr – so clean that no further finishing is needed before applying fittings
- Foot switch provides operator safety while freeing both hands for high-volume production demands

#### TECHNICAL DATA

• Range	Pipe	1/4" - 4" I.D.
	Tubing	5/8" - 4-1/2" O.D.
• Dimensions	19" x 10" x 19" (L x W x H)	
• Drive Type	Gear-driven rollers	
• Cutter Wheel	Heat-treated, high-speed tool steel	
• Motor	1/2 HP Universal AC/DC, 50-60 Hz Optional 230V motor	



Model C on optional stand (00037)

All models include a heavy-duty footswitch and one pipe cutter wheel.

Description	⚖️ lb	No.
E-Z CUTTER® Model A, 115V	121.0	<b>00032</b>
E-Z CUTTER® Model A, 230V	121.0	<b>00533</b>
E-Z CUTTER® Model C, 115V	125.0	<b>00033</b>
E-Z CUTTER® Model C, 230V	125.0	<b>00534</b>
<i>C versions include two heavy-duty rollers and two stationary supports</i>		
Steel pipe cutter wheel For galvanized, black, and stainless steel	1.0	<b>00034</b>
Copper tube cutter wheel	1.0	<b>00035</b>
Soil pipe cutter wheel	1.0	<b>00535</b>
Plastic pipe cutter wheel	1.0	<b>00536</b>
Stationary support	3.0	<b>00036</b>
E-Z CUTTER® stand	40.0	<b>00037</b>
Roller bearing support	3.0	<b>00069</b>
Pipe support fitting	1.0	<b>00071</b>
Foot switch, 115V	8.0	<b>00079</b>
Foot switch, 230V	8.0	<b>02350</b>

Turn your E-Z CUTTER® into a complete production system with these timesaving accessories:

#### FOR BENCH MOUNTING:

- Stationary Support (**00036**) mounts your 1-1/4" support pipe to the workbench surface
- Roller Bearing Support (**00069**) slides onto the support pipe and provides easy travel and rotation of work.

#### FOR FLOOR MOUNTING:

- E-Z CUTTER® Stand (**00037**) bolts to the floor for stationary support
- Pipe Support fitting (**00071**) (with 1" pipe legs) mounts onto 1-1/4" pipe also using the Roller Bearing Support on support pipe
- Pipe Jack with Ball-Bearing Transport Head (**00101**) replaces system of support pipe and fittings, providing a handy alternative for supporting the work.

# Notes

3

A large grid of graph paper for taking notes, consisting of 20 columns and 30 rows of small squares.